



## SECTION

**III**

# Nomination and Matching Process

*Version 5.1*



*EASEE-gas/Edig@s Workgroup*

*Document version: 5*

## 9 COPYRIGHT & LIABILITY

10 The Edig@s Workgroup (EASEE-Gas Message and Workflow Design Working Group) disclaims and  
11 excludes, and any user of the Edig@s Workgroup Implementation Guidelines acknowledges and agrees to  
12 the Edig@s Workgroup disclaimer of, any and all warranties, conditions or representations, express or  
13 implied, oral or written, with respect to the guidelines or any part thereof, including any and all implied  
14 warranties or conditions of title, non-infringement, merchantability, or fitness or suitability for any  
15 particular purpose (whether or not the Edig@s Workgroup knows, has reason to know, has been advised,  
16 or is otherwise in fact aware of any such purpose), whether alleged to arise by law, by reason of custom  
17 or usage in the trade, or by course of dealing. Each user of the guidelines also agrees that under no  
18 circumstances will the Edig@s Workgroup be liable for any special, incidental, exemplary, punitive or  
19 consequential damages arising out of any use of, or errors or omissions in, the guidelines.

**TABLE OF CONTENTS**

<b>1</b>	<b>REFERENCES.....</b>	<b>5</b>
<b>2</b>	<b>GENERAL OVERVIEW .....</b>	<b>5</b>
<b>3</b>	<b>NOMINATION PROCESS .....</b>	<b>7</b>
3.1	Functional definition .....	7
3.2	Workflow .....	10
3.3	Contextual model for the Nomination authorisation document .....	13
3.3.1	Information model structure.....	14
3.3.2	Information model description .....	15
3.3.3	Rules governing the Nomination authorisation Document class .....	15
3.3.4	Rules governing the Passive Market Participant class .....	18
3.3.5	Rules governing the Passive Account class.....	18
3.3.6	Rules governing the Connection Point class .....	19
3.3.7	Rules governing the Active Account class .....	19
3.4	Contextual model for the Nomination Document (NOMINT).....	21
3.4.1	Information model structure.....	22
3.4.2	Information model description .....	23
3.4.3	Rules governing the Nomination Document class .....	23
3.4.4	Rules governing the Connection Point class .....	26
3.4.5	Rules governing the NominationType class .....	27
3.4.6	Rules governing the Account class .....	27
3.4.7	Rules governing the Period class .....	29
3.4.8	Rules governing the Decomposition Quantity class .....	31
3.5	Contextual model for Delivery Order Document (DELORD) .....	32
3.5.1	Information model structure.....	33
3.5.2	Information model description .....	34
3.5.3	Rules governing the Delivery Order Document class .....	34
3.5.4	Rules governing the Connection Point class .....	37
3.5.5	Rules governing the Account class .....	37
3.5.6	Rules governing the Information Origin class .....	39
3.5.7	Rules governing the Period class .....	39
3.6	Contextual model for the Delivery Response Document (DELRES) .....	41
3.6.1	Information model structure.....	42
3.6.2	Information model description .....	43
3.6.3	Rules governing the Delivery Response Document class .....	43
3.6.4	Rules governing the Connection Point class .....	47
3.6.5	Rules governing the Account class .....	47
3.6.6	Rules governing the Information Origin timeseries class .....	49
3.6.7	Rules governing the Period class .....	49
3.6.8	Rules governing the Status class .....	51
3.7	Contextual model for Nomination Response Document (NOMRES).....	52
3.7.1	Information model structure.....	53
3.7.2	Information model description .....	54
3.7.3	Rules governing the Nomination Response Document class .....	54
3.7.4	Rules governing the Connection Point class .....	57
3.7.5	Rules governing the NominationType class .....	58
3.7.6	Rules governing the Account class .....	58
3.7.7	Rules governing the Information Origin TimeSeries class .....	60
3.7.8	Rules governing the Period class .....	60
3.7.9	Rules governing the Status class .....	62
3.7.10	Rules governing the Decomposition Quantity class .....	63
<b>4</b>	<b>DOCUMENT CHANGE LOG.....</b>	<b>64</b>

**LIST OF FIGURES**

Figure 1: The Nomination and Matching use case .....	5
Figure 2: Nomination sequence diagram.....	7
Figure 3: Virtual connection point nomination within a System Operator area .....	8
Figure 4: Nomination of end user schedules .....	9
Figure 5: Nomination workflow .....	10
Figure 6: TSO - TSO communication workflow .....	11
Figure 7: Nomination authorisation document contextual model .....	13
Figure 8: Nomination authorisation document assembly model .....	14
Figure 9: Nomination document contextuel model .....	21
Figure 10: Nomination document assembly model .....	22
Figure 11: Delivery order document contextual model.....	32
Figure 12: Delivery order document assembly model.....	33
Figure 13: Delivery response document contextual model .....	41
Figure 14: Delivery response document assembly model .....	42
Figure 15: Nomination response document contextual model .....	52
Figure 16: Nomination response document assembly model .....	53

## 1 REFERENCES

The content of the electronic documents defined in the implementation guide are based on the definition of terms and codes as agreed by the Edig@s Workgroup.

The requirements outlined in the “business Requirements Specification for the Nomination (NOM) Network Code” of ENTSOG are completely covered in this document. However, the document also covers requirements that go beyond the Nomination BRS in certain areas.

For the definition of the roles outlined in figure 1 refer to the Edigas RoleType codelist.

**It is strongly recommended to read the Introduction to the Edig@s MIG before implementing this process since it contains a number of general rules that are applicable for all the Edig@s messages.**

## 2 GENERAL OVERVIEW

The Edig@s standard has been created to facilitate the exchanges required to support the activities for the exchange of information within the gas market. The principal activities are outlined in the use case diagram in figure 1.

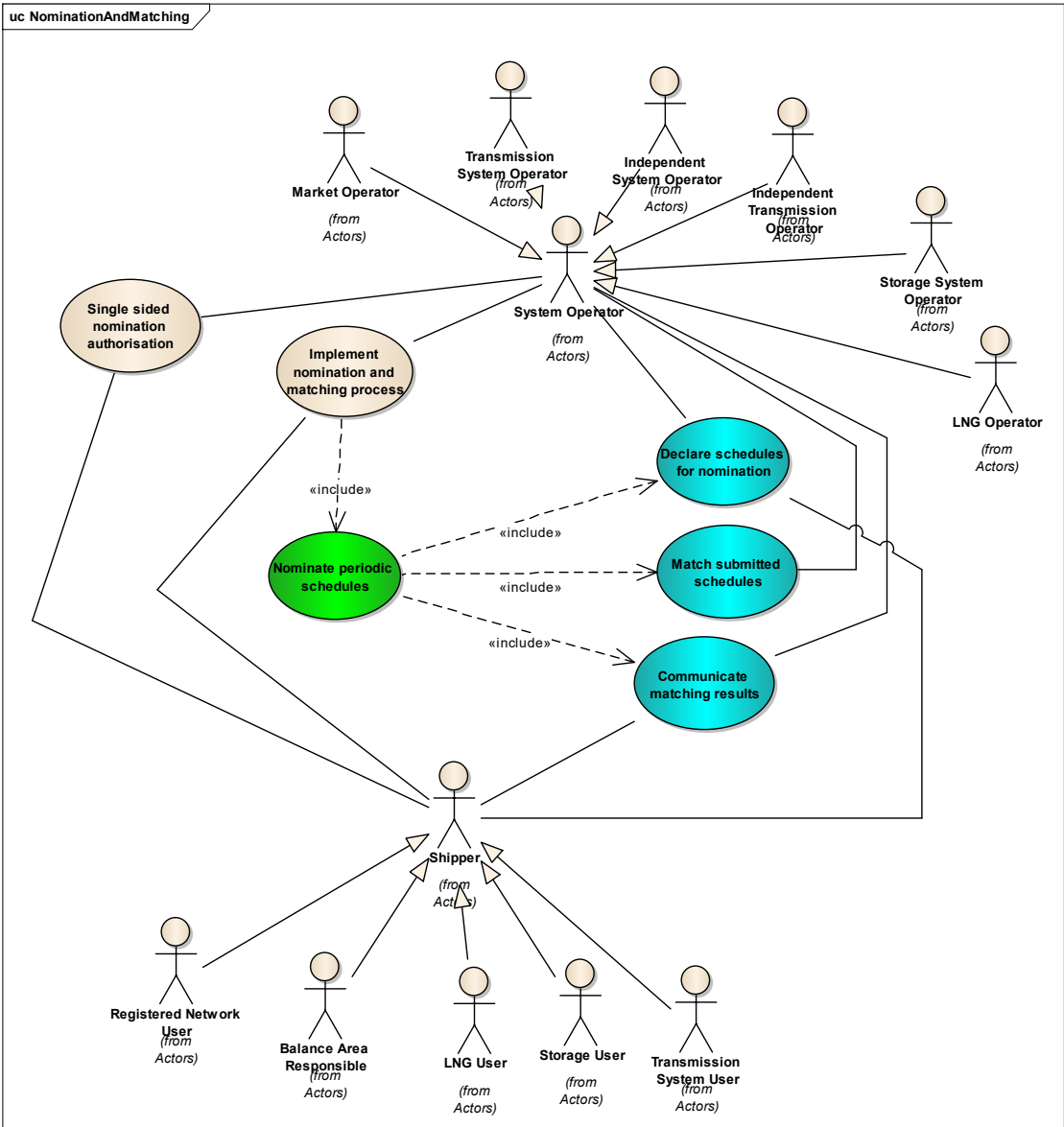


FIGURE 1: THE NOMINATION AND MATCHING USE CASE

The nomination and matching use case in figure 1 shows the different use cases that are possible within the nomination and matching process.

An optional use case concerns the provision by a Shipper (termed a passive shipper) of a single sided nomination authorisation by another Shipper. This enables the passive Shipper to not have to send nominations to the local System Operator.

The nomination of periodic schedules covers the nomination of gas schedules and has included within it three specific use cases:

1. The declaration of schedules for nomination
2. The matching of all nominated schedules
3. The provision of the matching results with any rectifications that have been imposed by the System Operators.

Many actors may be involved in the nomination and matching process. These actors have been generalised into either a System Operator for the management of the network or a Shipper for the various Traders that operate within the network.

The System Operator role covers:

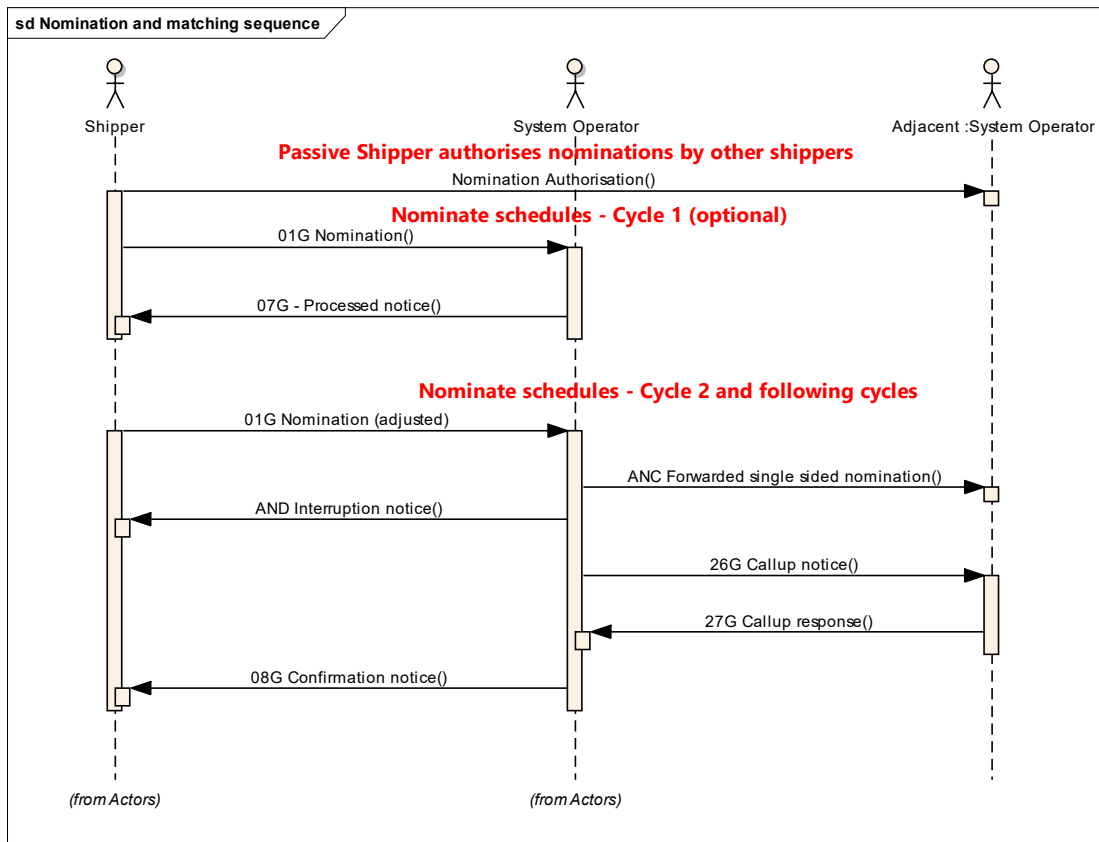
1. Transmission System Operator
2. Independent System Operator
3. Independent Transmission Operator
4. Storage System Operator
5. LNG Operator
6. Market Operator

The Shipper role covers:

1. Registered Network User
2. Balance Area Responsible
3. LNG User
4. Storage User
5. Transmission System User

### 3 NOMINATION PROCESS

#### 3.1 FUNCTIONAL DEFINITION



**FIGURE 2: NOMINATION SEQUENCE DIAGRAM**

Prior to any nominations a passive Shipper shall inform the local System Operator of the Shipper(s) that will be providing the single sided nominations.

There are two types of nomination:

1. Nominations that concern the supply of gas between two System Operator areas.
2. Nominations that concern the supply of gas within a System Operator area.

The focus of the above sequence diagram addresses specifically the first type of nomination.

The nomination of gas to be supplied between System Operator borders (figure 2) for a given period is handled with a two cycled approach.

- In the first cycle (flows 1 and 2) the System Operators receive nominations from their Shippers (flow 1), after processing internally, each System Operator informs its Shippers of the processed cross nominations (flow 2).
- In the second and following cycles (flows 3 to 8) the Shippers may rectify any anomalies in the nominations or provide modifications and resubmit them to the System Operators (flow 3). If a nomination document remains unchanged a resubmission is not necessary.

The System Operator that receives a single sided nomination retransmits the nominations received (flow 4) to the adjacent System Operator to enable processing on the other side.

The first time in a cycle that a System Operator has to carry out an interruption, and interruption notice is sent to the Shipper for information (flow 5). The Shipper is not informed of any other interruptions that occur within the cycle.

The System Operator will make use of the last nomination document received. The System Operators will validate the Shipper nominations for system related issues before exchanging the processed nominations (i.e. those able to flow as defined in the "Nomination and Matching CBP") with the adjacent System Operator (flows 6 and 7). Flow 7 contains the two time series, one with the status 14G, processed by the SO, containing the values as processed by the matching System Operator and one time series with the status 16G providing the values that have been confirmed by the matching System Operator. The sender of flow 6 and flow 7 is

defined by bilateral agreement. In the case of any anomalies the System Operators apply predefined rules to align the nominations in question. The Shippers are then informed of these finalised schedules (flow 8). Flow 8 contains three time series, one with the confirmed nomination of the Shipper (16G), one with processed nomination by the adjacent System Operator (15G) and one with the processed nomination by the System Operator (14G).

It is also possible to carry out the nomination process in a single cycle approach. In this case a nomination is sent by the Shipper to the System Operator as in flow 3.

The System Operator then transmits the complete set of nomination information to the Adjacent System Operator as in flow 6.

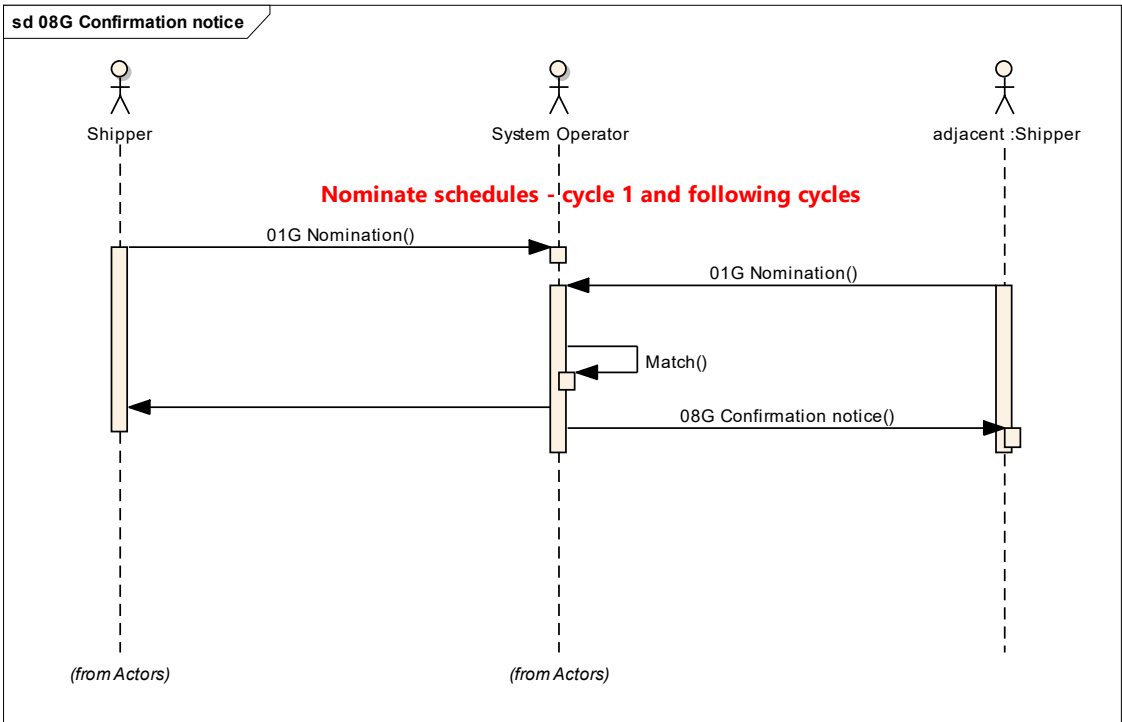
The Adjacent System Operator carries out an immediate matching and transmits the results as in flow 7.

These results are then sent to the relevant Shippers as in flow 8.

In essence sequences 1 and 2 are not implemented.

The second type of nomination (figure 3) includes two sub-types:

- A: Nominations that concern a virtual connection point (e.g. balancing point, trading point, ...) within a System Operator area.
- B: Nominations that concern the supply of gas to an End User within a System Operator area

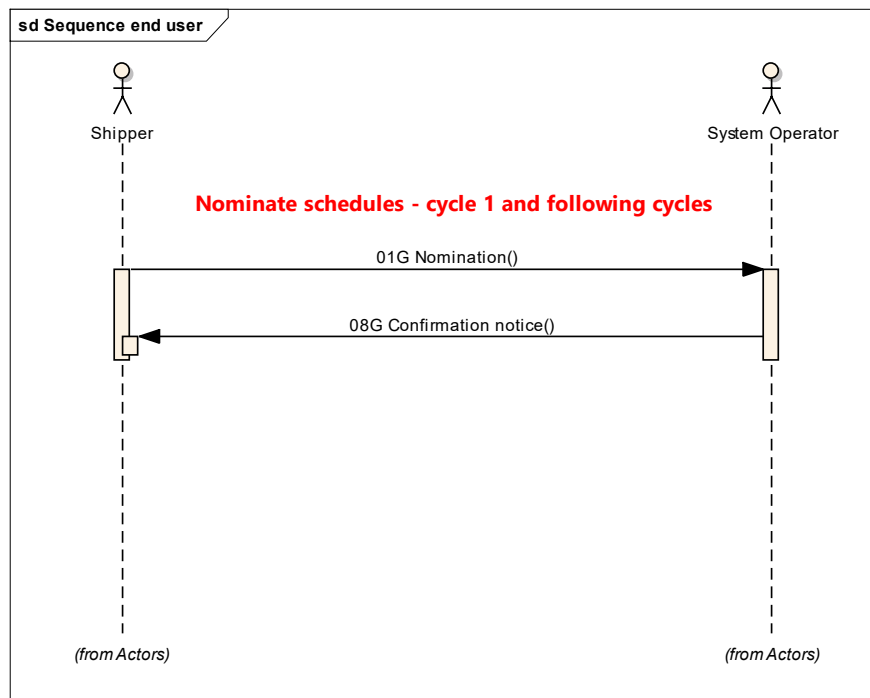


**FIGURE 3: VIRTUAL CONNECTION POINT NOMINATION WITHIN A SYSTEM OPERATOR AREA**

Figure 3 addresses specifically the first sub-type. The nomination of gas on a virtual connection point for a given period is handled with a one cycled approach.

In the first and following cycles (flows 1 to 2) the Shippers may nominate or rectify any anomalies in the nominations or provide modifications and resubmit them to the System Operator. The System Operator will validate the Shipper nominations for system related issues. In the case of any anomalies the System Operator applies predefined rules to align the nominations in question (flow 3). The Shippers are then informed of these finalised schedules (flow 4 and 5). Flows 4 and 5 contain two time series, one with the confirmed nomination (16G) and one with the processed nomination of the counter party (18G).





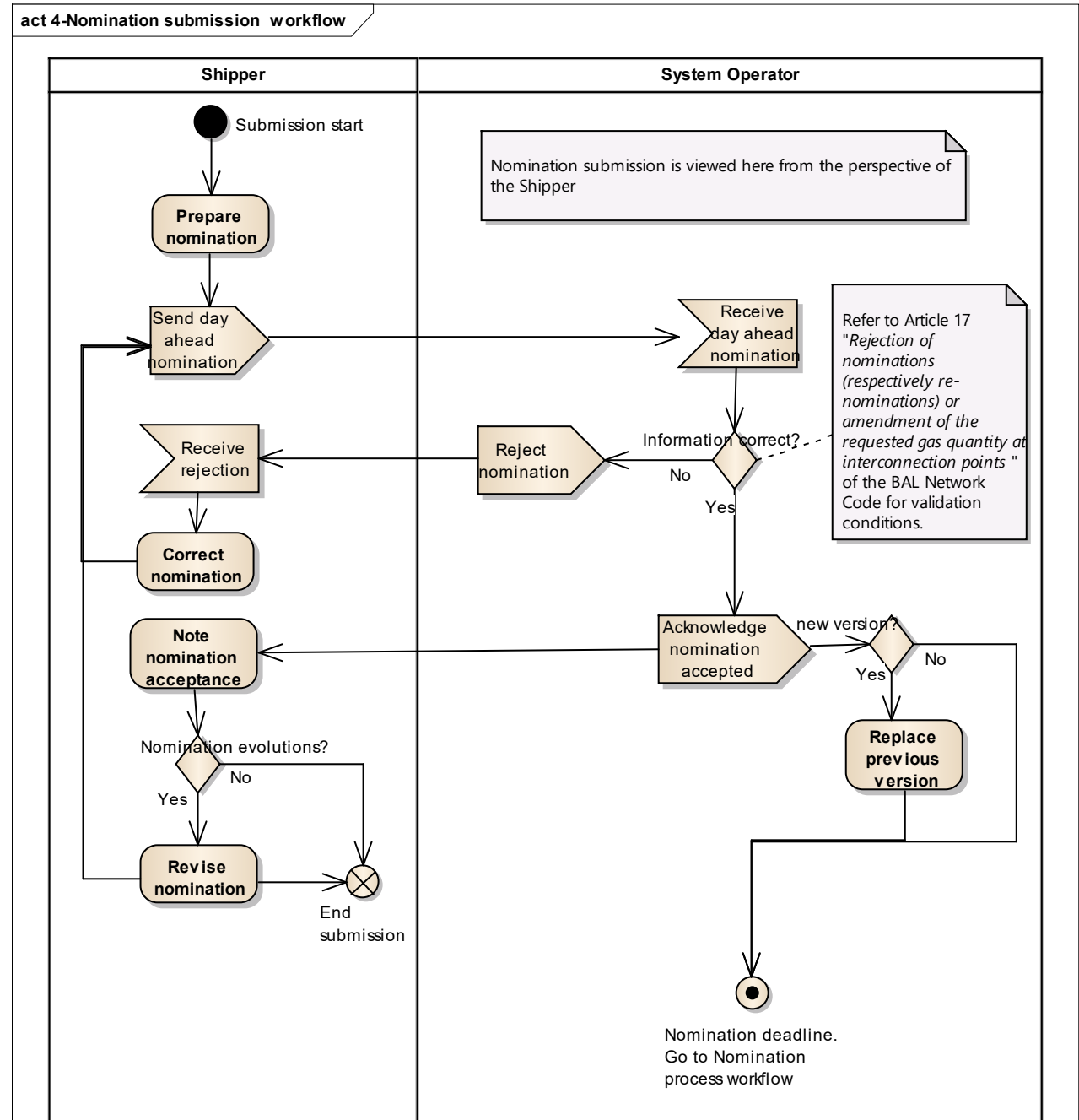
**FIGURE 4: NOMINATION OF END USER SCHEDULES**

Figure 4 addresses specifically the second sub-type.

In the first and following cycles (flows 1 to 2) the System Operator receives nominations from its Shippers (flow 1). The System Operator will validate the Shipper nominations for system related issues. In the case of any anomalies the System Operator applies predefined rules to align the nominations in question. The Shippers are then informed of these finalised schedules (flow 2). Flow 2 contains one time series: the confirmed quantities of the Shipper (16G).

198

3.2 WORKFLOW



199

200

FIGURE 5: NOMINATION WORKFLOW

201 The nomination process begins with the transmission by approved Shippers of their nominations to their  
202 System Operator.  
203 If it has been agreed to acknowledge the nomination submission indicating its full or partial acceptance  
204 prior to processing or eventually its rejection the nomination document is validated and the relevant  
205 acknowledgement is transmitted except in the case of a transport constraint where a reduced  
206 confirmation will be provided.

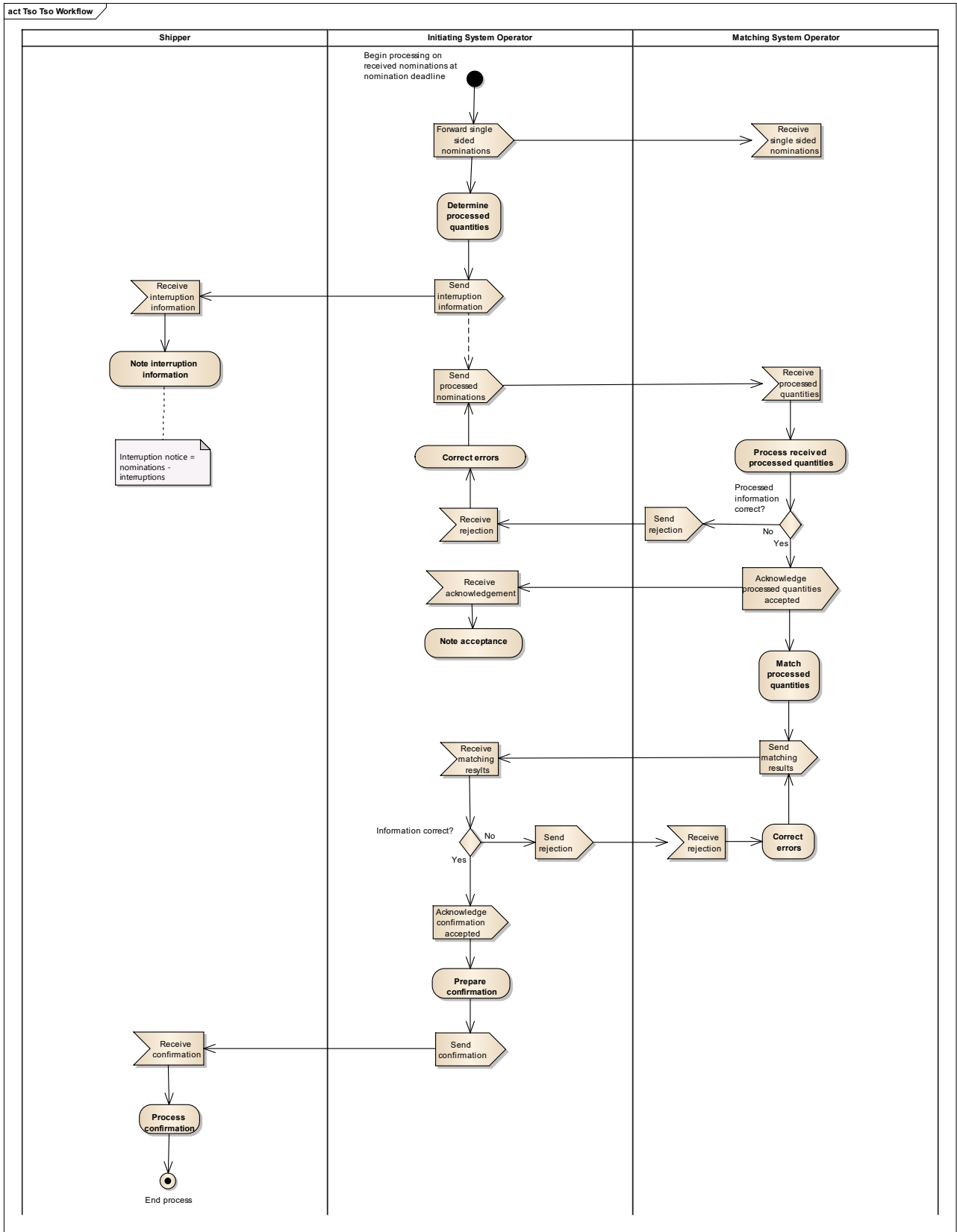


FIGURE 6: TSO - TSO COMMUNICATION WORKFLOW

As soon as possible after the nomination deadline, the Initiating System Operator forwards any single sided nominations received to the Matching System Operator<sup>1</sup>.

<sup>1</sup> To facilitate reading of the document it is assumed that the Initiating System Operator is the only party to receive single sided nominations. In reality either System Operator or only the Matching System Operator may receive single sided nominations when bilaterally agreed.

The Matching System Operator may validate the information received and inform the Initiating System Operator of any discrepancies. In the case of errors the initiating System Operator may adjust the initial acknowledgement with a new version and transmit it to the Shipper with the notified errors.

Both System Operators then process all the nominations per adjacent System Operator. If a System Operator identifies potential interruptions an interruption notice is transmitted to the Shipper. This only happens once per nomination cycle.

The Initiating System Operator submits the processed nominations to the Matching System Operator.

The following matching steps are carried out:

1. The nominations are matched by the Matching System Operator.
2. The finalised results are submitted to the Initiating System Operator in a Callup Response.
3. Each System Operator informs the local Shippers of the results in a Confirmation notice.
4. The Shipper may optionally inform their adjacent Shippers of the single sided confirmations.

### 3.3 CONTEXTUAL MODEL FOR THE NOMINATION AUTHORISATION DOCUMENT

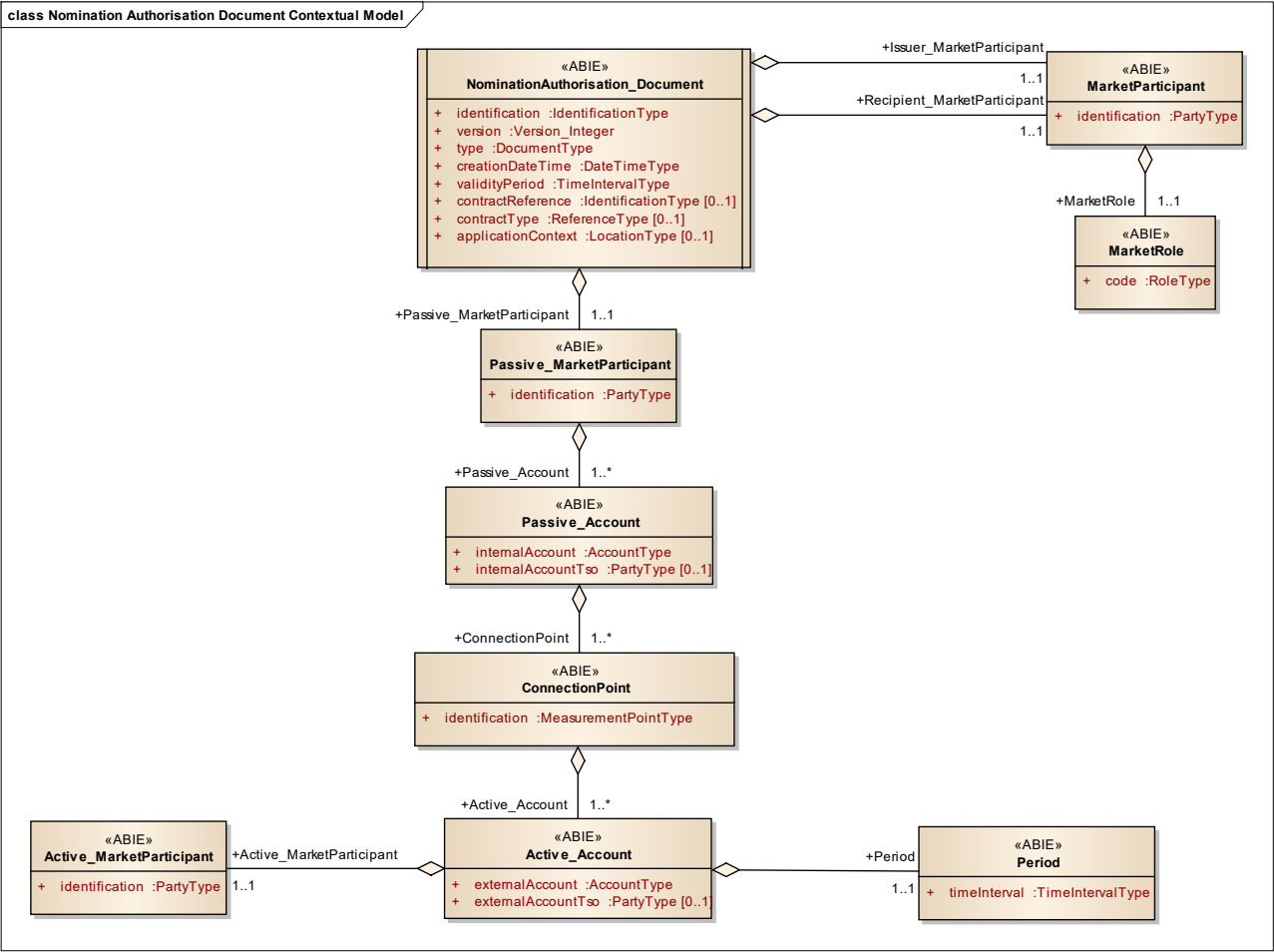


FIGURE 7: NOMINATION AUTHORISATION DOCUMENT CONTEXTUAL MODEL

3.3.1 INFORMATION MODEL STRUCTURE

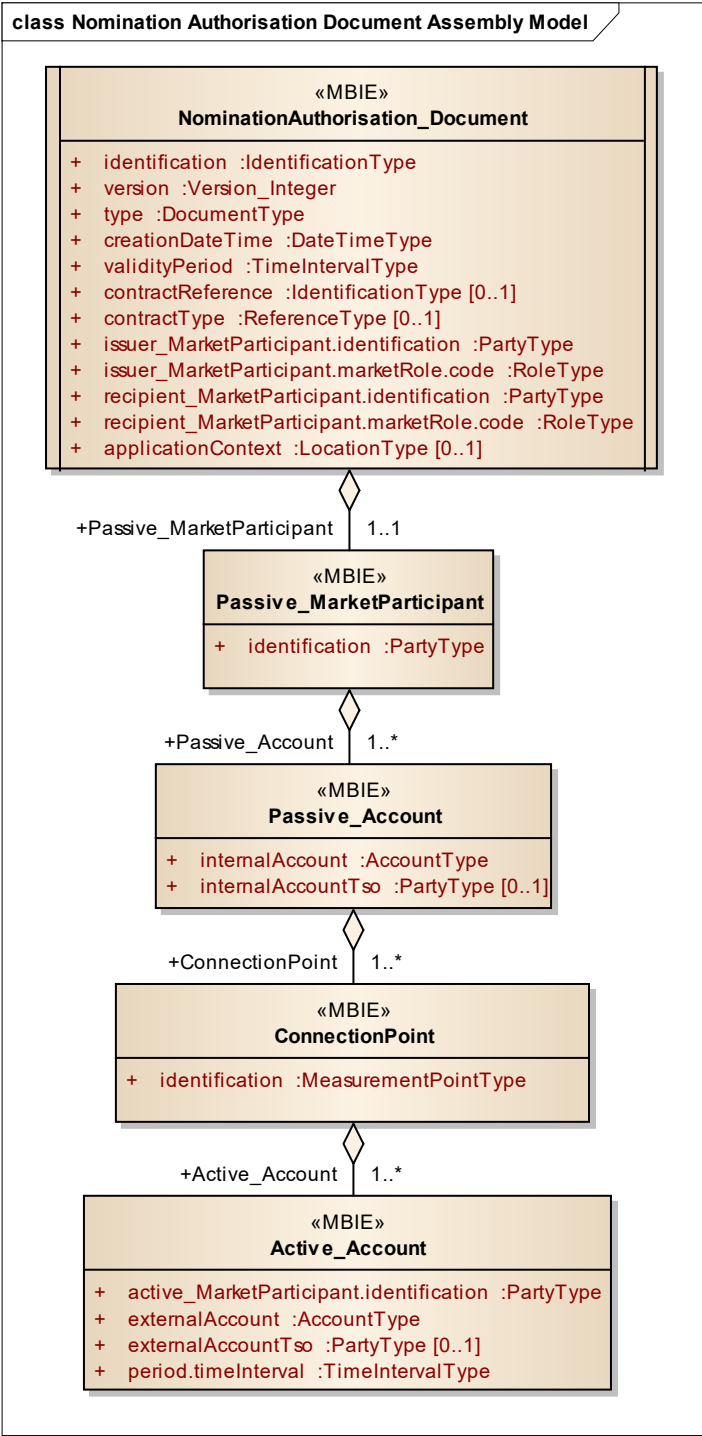


FIGURE 8: NOMINATION AUTHORISATION DOCUMENT ASSEMBLY MODEL

### 3.3.2 INFORMATION MODEL DESCRIPTION

A Nomination Authorisation Document is used prior to the nomination phase by a Shipper to inform the local System Operator that the Shipper's nominations may be provided by a Shipper designated in the message in a single sided mode of operation.

### 3.3.3 RULES GOVERNING THE NOMINATION AUTHORISATION DOCUMENT CLASS

A document is uniquely identified by:

- The identification of the document
- The issuer Identification
- The identification of the version.

#### 3.3.3.1 IDENTIFICATION

ACTION	DESCRIPTION
<b>Definition of element</b>	Identification of the document describing the Nomination Authorisation Document.
<b>Description</b>	A Nomination Authorisation Document must have a unique identification assigned by the issuer of the document to be sent to a recipient for a given validity period. The issuer must guarantee that this identification is unique over time.
<b>Size</b>	The identification of a Nomination Authorisation Document may not exceed 35 alphanumeric characters.
<b>Applicability</b>	This information is mandatory.
<b>Dependence requirements</b>	None.

#### 3.3.3.2 VERSION

ACTION	DESCRIPTION
<b>Definition of element</b>	Version of the document being sent.
<b>Description</b>	The document version is used to identify a given version of a Nomination Authorisation Document. The first version number for a given document identification shall normally be 1. The document version number must be incremented for each retransmission of a document that contains changes to the previous version. The receiving system shall only accept a document with a version number which is greater than the previous version number of the same document.
<b>Size</b>	A version number may not exceed 3 numeric characters.
<b>Applicability</b>	This information is mandatory.
<b>Dependence requirements</b>	None.

#### 3.3.3.3 TYPE

ACTION	DESCRIPTION
<b>Definition of element</b>	The type of the document being sent.
<b>Description</b>	This identifies the type of Nomination Authorisation Document that is being sent. The following types of Nomination Authorisation Document are permitted: ANN = Nomination authorisation request. A message used by a Shipper to inform a System Operator that the Shipper designated in the document may provide the nominations in a single sided mode of operation. (Reference Edig@s DocumentType code list).
<b>Size</b>	A type may not exceed 3 alphanumeric characters.
<b>Applicability</b>	This information is mandatory.
<b>Dependence requirements</b>	None.

## 3.3.3.4 CREATIONDATETIME

ACTION	DESCRIPTION
<b>Definition of element</b>	Date and time of the creation of the document.
<b>Description</b>	The date and time that the document was prepared for transmission by the application of the issuer.
<b>Size</b>	Refer to section 1.2 of the Edig@s General Guidelines for information on the attribute structure.
<b>Applicability</b>	This information is mandatory.
<b>Dependence requirements</b>	None.

## 3.3.3.5 VALIDITYPERIOD

ACTION	DESCRIPTION
<b>Definition of element</b>	The start and end date and time of the period of validity covered in the document.
<b>Description</b>	This information provides the start and end date and time of the period of validity of the document.
<b>Size</b>	Refer to section 1.2 of the Edig@s General Guidelines for information on the attribute structure.
<b>Applicability</b>	This information is mandatory.
<b>Dependence requirements</b>	None.

## 3.3.3.6 CONTRACTREFERENCE

ACTION	DESCRIPTION
<b>Definition of element</b>	Reference to a contract covering the Nomination Document.
<b>Description</b>	The contract reference provides the contract identification relevant for the whole document.
<b>Size</b>	The contract reference may not exceed 35 alphanumeric characters.
<b>Applicability</b>	This information is dependent.
<b>Dependence requirements</b>	This attribute is only used based on local market requirements.

## 3.3.3.7 CONTRACTTYPE

ACTION	DESCRIPTION
<b>Definition of element</b>	Identification of the type of contract covering the document.
<b>Description</b>	The contract type identifies the nature of the contract defined in the document. Refer to the Edigas ReferenceType code list for the list of valid codes.
<b>Size</b>	The maximum length of the contract type is 3 alphanumeric characters.
<b>Applicability</b>	This information is dependent.
<b>Dependence requirements</b>	This information is used depending on local market rules.

## 3.3.3.8 ISSUER\_MARKETPARTICIPANT.IDENTIFICATION – CODINGScheme

ACTION	DESCRIPTION
<b>Definition of element</b>	Identification of the party who has issued the document.
<b>Description</b>	The issuer of the document is identified by a unique coded identification. This code identifies the party that is the "owner" of the information being transmitted in the document. The codification scheme used for the coded identification is indicated by the coding scheme attribute and shall indicate the code "305" for an EIC party code.
<b>Size</b>	The maximum length of an issuer's identification is 16 alphanumeric characters. The maximum length of the coding scheme code is 3 alphanumeric characters.
<b>Applicability</b>	Both the identification and the coding scheme are mandatory.
<b>Dependence requirements</b>	None.



247 **3.3.3.9 ISSUER\_MARKETPARTICIPANT.MARKETROLE.CODE**

ACTION	DESCRIPTION
<b>Definition of element</b>	Identification of the role that the party who has issued the document is playing.
<b>Description</b>	The role being played by the issuer of the document for this transmission. The following roles are permitted for this document: ZSH = Shipper (Reference Edig@s RoleType code list)
<b>Size</b>	The maximum length of this information is 3 alphanumeric characters.
<b>Applicability</b>	This information is mandatory.
<b>Dependence requirements</b>	None.

248 **3.3.3.10 RECIPIENT\_MARKETPARTICIPANT.IDENTIFICATION – CODINGScheme**

ACTION	DESCRIPTION
<b>Definition of element</b>	Identification of the party who is receiving the document.
<b>Description</b>	The recipient of the document is identified by a unique coded identification. The codification scheme used for the coded identification is indicated by the coding scheme attribute and shall indicate the code "305" for an EIC Party code.
<b>Size</b>	The maximum length of a recipient's identification is 16 alphanumeric characters. The maximum length of the coding scheme code is 3 alphanumeric characters.
<b>Applicability</b>	Both the identification and the coding scheme are mandatory.
<b>Dependence requirements</b>	None.

249 **3.3.3.11 RECIPIENT\_MARKETPARTICIPANT.MARKETROLE.CODE**

ACTION	DESCRIPTION
<b>Definition of element</b>	Identification of the role that the party who receives the document is playing.
<b>Description</b>	The role being played by the recipient of the document for this transmission. The following role is permitted for this document: ZSO = System Operator (Reference Edig@s RoleType code list)
<b>Size</b>	The maximum length of this information is 3 alphanumeric characters.
<b>Applicability</b>	This information is mandatory.
<b>Dependence requirements</b>	None.

250 **3.3.3.12 APPLICATIONCONTEXT – CODINGScheme**

ACTION	DESCRIPTION
<b>Definition of element</b>	The identification of a particular context that is significant to the recipient.
<b>Description</b>	The Application Context is used to identify a particular context (location, application, etc.) that is relevant to the recipient of the document. The codification scheme used for the coded identification is indicated by the coding scheme attribute and shall indicate the code "305" for an EIC Location code.
<b>Size</b>	The maximum length of an application context's is 16 alphanumeric characters. The maximum length of the coding scheme code is 3 alphanumeric characters.
<b>Applicability</b>	This information is dependent.
<b>Dependence requirements</b>	The information is only provided when there is bi lateral agreement between the parties.

### 3.3.4 RULES GOVERNING THE PASSIVE MARKET PARTICIPANT CLASS

The Passive Market Participant class designates the Shipper who will play the passive role in a single sided nomination. There is only one Passive Market Participant class per document.

#### 3.3.4.1 IDENTIFICATION – CODINGScheme

ACTION	DESCRIPTION
<b>Definition of element</b>	Identification of the party who will play the passive role in a single sided nomination.
<b>Description</b>	The passive market participant is identified by a unique coded identification. The codification scheme used for the coded identification is indicated by the coding scheme attribute and shall indicate the code "305" for an EIC Party code.
<b>Size</b>	The maximum length of the identification is 16 alphanumeric characters. The maximum length of the coding scheme code is 3 alphanumeric characters.
<b>Applicability</b>	Both the identification and the coding scheme are mandatory.
<b>Dependence requirements</b>	None.

### 3.3.5 RULES GOVERNING THE PASSIVE ACCOUNT CLASS

The Passive Account class identifies the accounts of the passive market participant that may be used in single sided nominations.

There may be one to many passive accounts in a Nomination Authorisation Document.

#### 3.3.5.1 INTERNALACCOUNT – CODINGScheme

ACTION	DESCRIPTION
<b>Definition of element</b>	The identification of an internal account that may be used in a single sided nomination.
<b>Description</b>	The identification of an internal passive market participant account that may be used in a single sided nomination. The codification scheme used for the coded identification is indicated by the coding scheme attribute and shall indicate the code "ZSO" for a System Operator code or "305" for an EIC area code.
<b>Size</b>	The maximum length of the internal account is 35 alphanumeric characters. The maximum length of the coding scheme is 3 alphanumeric characters.
<b>Applicability</b>	Both the internal account and the coding scheme are mandatory.
<b>Dependence requirements</b>	None.

#### 3.3.5.2 INTERNALACCOUNTTSO - CODINGScheme

ACTION	DESCRIPTION
<b>Definition of element</b>	Identification of the System Operator that created the internal account identification.
<b>Description</b>	The System Operator that created the internal account identification. The codification scheme used for the coded identification is indicated by the coding scheme attribute and shall indicate the code "305" for an EIC party code.
<b>Size</b>	The maximum length of the identification is 16 alphanumeric characters. The maximum length of the coding scheme code is 3 alphanumeric characters.
<b>Applicability</b>	Both the identification and the coding scheme are dependent.
<b>Dependence requirements</b>	The InternalAccountTso is required if the identification of the System Operator that created the account is ambiguous.

### 3.3.6 RULES GOVERNING THE CONNECTION POINT CLASS

There may be one to many connection points in a Nomination Authorisation Document.

There may only be one Connection Point class for a given Connection Point Identification.

#### 3.3.6.1 IDENTIFICATION – CODINGScheme

ACTION	DESCRIPTION
<b>Definition of element</b>	The identification of a connection point.
<b>Description</b>	The identification of a connection point within a System Operator's system. The codification scheme used for the coded identification is indicated by the coding scheme attribute and shall indicate the code "305" for an EIC measurement point code or the code "ZSO" for a System Operator code.
<b>Size</b>	The maximum length of the connection point identification is 35 alphanumeric characters. The maximum length of the coding scheme is 3 alphanumeric characters.
<b>Applicability</b>	Both the connection point identification and the coding scheme are mandatory.
<b>Dependence requirements</b>	None.

### 3.3.7 RULES GOVERNING THE ACTIVE ACCOUNT CLASS

The Active Account class identifies the accounts of the active market participant that may be used in single sided nominations.

There may be one to many active accounts in a Nomination Authorisation Document.

#### 3.3.7.1 ACTIVE\_MARKETPARTICIPANT.IDENTIFICATION – CODINGScheme

ACTION	DESCRIPTION
<b>Definition of element</b>	Identification of the party who will play the active role in a single sided nomination.
<b>Description</b>	The active market participant is identified by a unique coded identification. It is the participant that may submit single sided nominations on behalf of the passive market participant. The codification scheme used for the coded identification is indicated by the coding scheme attribute and shall indicate the code "305" for an EIC Party code.
<b>Size</b>	The maximum length of the identification is 16 alphanumeric characters. The maximum length of the coding scheme code is 3 alphanumeric characters.
<b>Applicability</b>	Both the identification and the coding scheme are mandatory.
<b>Dependence requirements</b>	None.

#### 3.3.7.2 EXTERNALACCOUNT – CODINGScheme

ACTION	DESCRIPTION
<b>Definition of element</b>	The identification of an external account that may be used in a single sided nomination.
<b>Description</b>	The identification of an external active market participant account that may be used in a single sided nomination. The codification scheme used for the coded identification is indicated by the coding scheme attribute and shall indicate the code "ZSO" for a System Operator code or "305" for an EIC area code.
<b>Size</b>	The maximum length of the external account is 35 alphanumeric characters. The maximum length of the coding scheme is 3 alphanumeric characters.
<b>Applicability</b>	Both the external account and the coding scheme are mandatory.
<b>Dependence requirements</b>	None.

271

**3.3.7.3 EXTERNALACCOUNTTSO - CODINGScheme**

ACTION	DESCRIPTION
<b>Definition of element</b>	Identification of the System Operator that created the external account identification.
<b>Description</b>	The System Operator that created the external account identification. The codification scheme used for the coded identification is indicated by the coding scheme attribute and shall indicate the code "305" for an EIC party code.
<b>Size</b>	The maximum length of the identification is 16 alphanumeric characters. The maximum length of the coding scheme code is 3 alphanumeric characters.
<b>Applicability</b>	Both the identification and the coding scheme are dependent.
<b>Dependence requirements</b>	The ExternalAccountTso is required if the identification of the System Operator that created the account is ambiguous.

272

**3.3.7.4 PERIOD.TIMEINTERVAL**

ACTION	DESCRIPTION
<b>Definition of element</b>	The start and end date and time of the period of validity where the active market participant may submit single sided nominations.
<b>Description</b>	This information provides the start and end date and time where single sided nominations may be submitted for the account.
<b>Size</b>	Refer to section 1.2 of the Edig@s General Guidelines for information on the attribute structure.
<b>Applicability</b>	This information is mandatory.
<b>Dependence requirements</b>	None.

### 3.4 CONTEXTUAL MODEL FOR THE NOMINATION DOCUMENT (NOMINT)

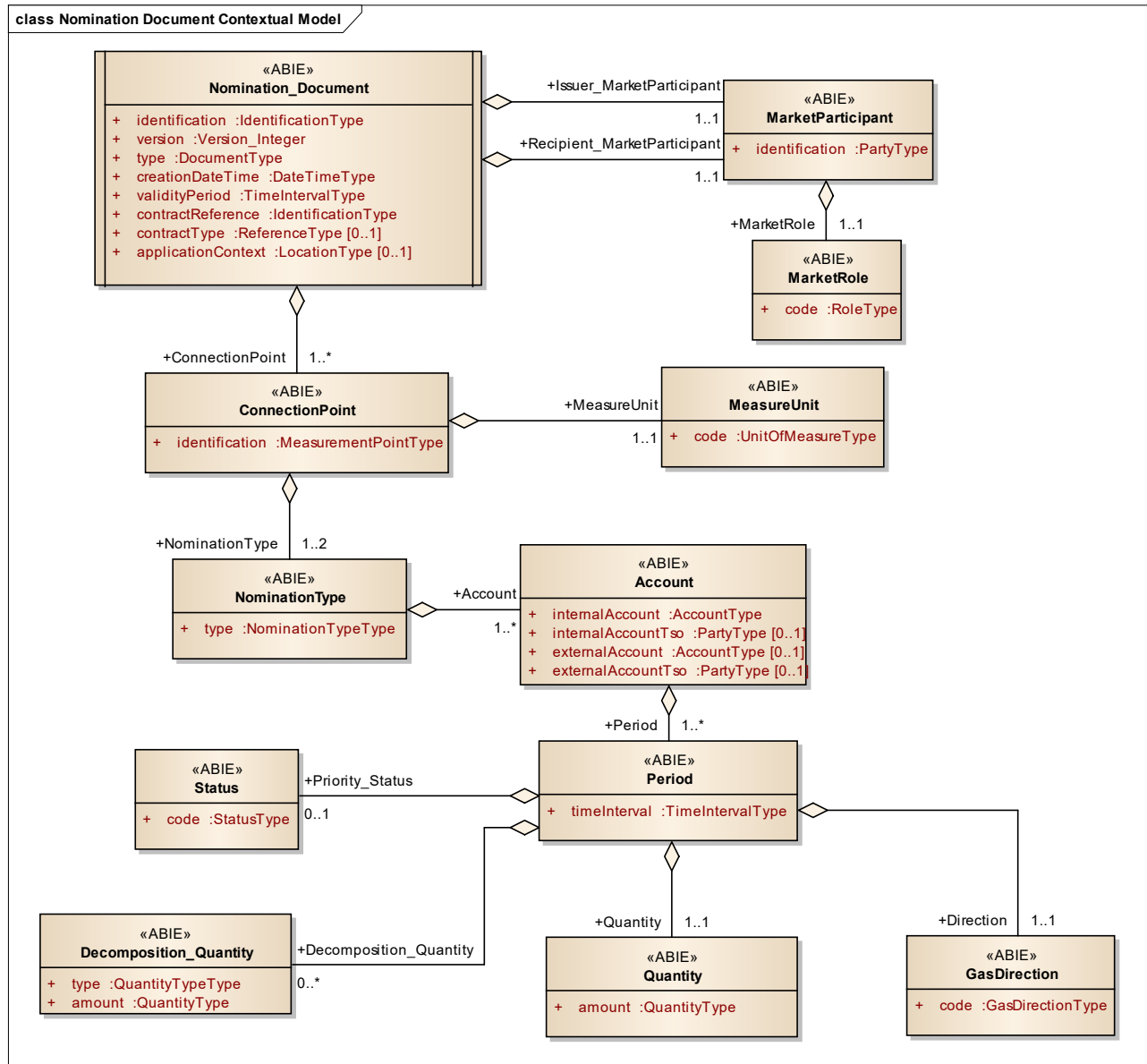


FIGURE 9: NOMINATION DOCUMENT CONTEXTUEL MODEL

3.4.1 INFORMATION MODEL STRUCTURE

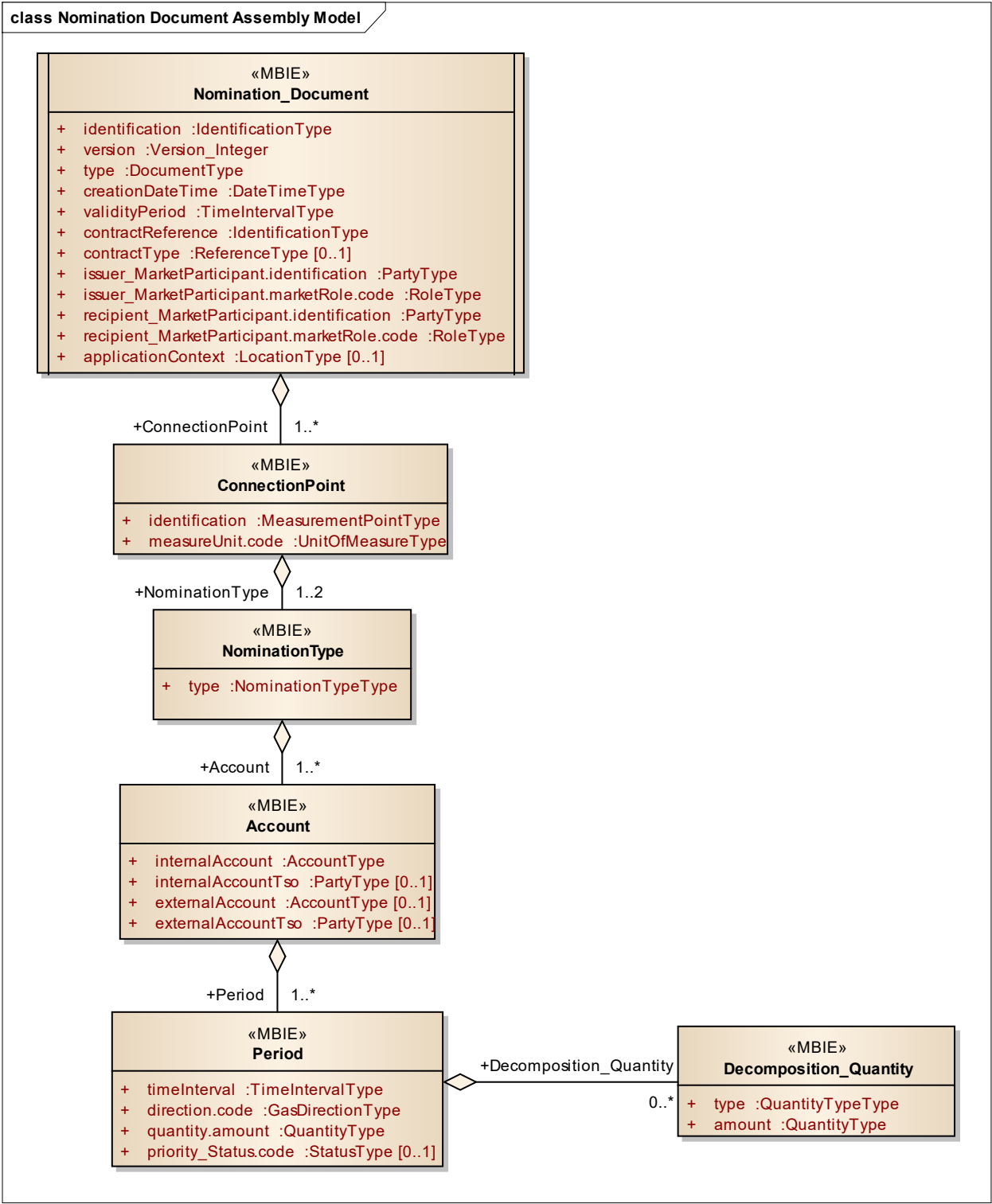


FIGURE 10: NOMINATION DOCUMENT ASSEMBLY MODEL

### 3.4.2 INFORMATION MODEL DESCRIPTION

A Nomination Document is used during the transport phase by a Shipper to send the initial nominations and any rectifications after reception of the Nomination Confirmation Document following the initial transmission.

### 3.4.3 RULES GOVERNING THE NOMINATION DOCUMENT CLASS

A document is uniquely identified by:

- The identification of the document
- The issuer Identification
- The identification of the version.

#### 3.4.3.1 IDENTIFICATION

ACTION	DESCRIPTION
<b>Definition of element</b>	Identification of the document describing the Nomination Document.
<b>Description</b>	A Nomination Document must have a unique identification assigned by the issuer of the document to be sent to a recipient for a given validity period. The issuer must guarantee that this identification is unique over time.
<b>Size</b>	The identification of a Nomination Document may not exceed 35 alphanumeric characters.
<b>Applicability</b>	This information is mandatory.
<b>Dependence requirements</b>	None.

#### 3.4.3.2 VERSION

ACTION	DESCRIPTION
<b>Definition of element</b>	Version of the document being sent.
<b>Description</b>	The document version is used to identify a given version of a Nomination Document. The first version number for a given document identification shall normally be 1. The document version number must be incremented for each retransmission of a document that contains changes to the previous version. The receiving system shall only accept a document with a version number which is greater than the previous version number of the same document.
<b>Size</b>	A version number may not exceed 3 numeric characters.
<b>Applicability</b>	This information is mandatory.
<b>Dependence requirements</b>	None.

#### 3.4.3.3 TYPE

ACTION	DESCRIPTION
<b>Definition of element</b>	The type of the document being sent.
<b>Description</b>	This identifies the type of Nomination Document that is being sent. The following types of Nomination Document are permitted: 01G = Nomination. A message used by a Shipper to nominate the quantities to be transmitted within the stated period (Reference Edig@s DocumentType code list).
<b>Size</b>	A type may not exceed 3 alphanumeric characters.
<b>Applicability</b>	This information is mandatory.
<b>Dependence requirements</b>	None.

## 3.4.3.4 CREATIONDATETIME

ACTION	DESCRIPTION
<b>Definition of element</b>	Date and time of the creation of the document.
<b>Description</b>	The date and time that the document was prepared for transmission by the application of the issuer.
<b>Size</b>	Refer to section 1.2 of the Edig@s General Guidelines for information on the attribute structure.
<b>Applicability</b>	This information is mandatory.
<b>Dependence requirements</b>	None.

## 3.4.3.5 VALIDITYPERIOD

ACTION	DESCRIPTION
<b>Definition of element</b>	The start and end date and time of the period of validity covered in the document.
<b>Description</b>	This information provides the start and end date and time of the period of validity of the document.
<b>Size</b>	Refer to section 1.2 of the Edig@s General Guidelines for information on the attribute structure.
<b>Applicability</b>	This information is mandatory.
<b>Dependence requirements</b>	None.

## 3.4.3.6 CONTRACTREFERENCE

ACTION	DESCRIPTION
<b>Definition of element</b>	Reference to a contract covering the Nomination Document.
<b>Description</b>	The contract reference provides the contract identification relevant for the whole document.
<b>Size</b>	The contract reference may not exceed 35 alphanumeric characters.
<b>Applicability</b>	This information is mandatory.
<b>Dependence requirements</b>	None.

## 3.4.3.7 CONTRACTTYPE

ACTION	DESCRIPTION
<b>Definition of element</b>	Identification of the type of contract covering the document.
<b>Description</b>	The contract type identifies the nature of the contract defined in the document. Refer to the Edigas ReferenceType code list for the list of valid codes.
<b>Size</b>	The maximum length of the contract type is 3 alphanumeric characters.
<b>Applicability</b>	This information is dependent.
<b>Dependence requirements</b>	This information is used depending on local market rules.

## 3.4.3.8 ISSUER\_MARKETPARTICIPANT.IDENTIFICATION – CODINGScheme

ACTION	DESCRIPTION
<b>Definition of element</b>	Identification of the party who has issued the document.
<b>Description</b>	The issuer of the document is identified by a unique coded identification. This code identifies the party that is the "owner" of the information being transmitted in the document. The codification scheme used for the coded identification is indicated by the coding scheme attribute and shall indicate the code "305" for an EIC party code.
<b>Size</b>	The maximum length of an issuer's identification is 16 alphanumeric characters. The maximum length of the coding scheme code is 3 alphanumeric characters.
<b>Applicability</b>	Both the identification and the coding scheme are mandatory.
<b>Dependence requirements</b>	None.



296 **3.4.3.9 ISSUER\_MARKETPARTICIPANT.MARKETROLE.CODE**

ACTION	DESCRIPTION
<b>Definition of element</b>	Identification of the role that the party who has issued the document is playing.
<b>Description</b>	The role being played by the issuer of the document for this transmission. The following roles are permitted for this document: ZSH = Shipper ZSY = Balance Area Responsible (e.g. handles Shippers with no formal contract). (Reference Edig@s RoleType code list)
<b>Size</b>	The maximum length of this information is 3 alphanumeric characters.
<b>Applicability</b>	This information is mandatory.
<b>Dependence requirements</b>	None.

297 **3.4.3.10 RECIPIENT\_MARKETPARTICIPANT.IDENTIFICATION – CODINGScheme**

ACTION	DESCRIPTION
<b>Definition of element</b>	Identification of the party who is receiving the document.
<b>Description</b>	The recipient of the document is identified by a unique coded identification. The codification scheme used for the coded identification is indicated by the coding scheme attribute and shall indicate the code "305" for an EIC Party code.
<b>Size</b>	The maximum length of a recipient's identification is 16 alphanumeric characters. The maximum length of the coding scheme code is 3 alphanumeric characters.
<b>Applicability</b>	Both the identification and the coding scheme are mandatory.
<b>Dependence requirements</b>	None.

298 **3.4.3.11 RECIPIENT\_MARKETPARTICIPANT.MARKETROLE.CODE**

ACTION	DESCRIPTION
<b>Definition of element</b>	Identification of the role that the party who receives the document is playing.
<b>Description</b>	The role being played by the recipient of the document for this transmission. The following role is permitted for this document: ZSO = System Operator (Reference Edig@s RoleType code list)
<b>Size</b>	The maximum length of this information is 3 alphanumeric characters.
<b>Applicability</b>	This information is mandatory.
<b>Dependence requirements</b>	None.

## 3.4.3.12 APPLICATIONCONTEXT – CODINGScheme

ACTION	DESCRIPTION
<b>Definition of element</b>	The identification of a particular context that is significant to the recipient.
<b>Description</b>	The Application Context is used to identify a particular context (location, application, etc.) that is relevant to the recipient of the document. The codification scheme used for the coded identification is indicated by the coding scheme attribute and shall indicate the code "305" for an EIC Location code.
<b>Size</b>	The maximum length of an application context's is 16 alphanumeric characters. The maximum length of the coding scheme code is 3 alphanumeric characters.
<b>Applicability</b>	This information is dependent.
<b>Dependence requirements</b>	The information is only provided when there is bi lateral agreement between the parties.

## 3.4.4 RULES GOVERNING THE CONNECTION POINT CLASS

There may be one to many connection points in a Nomination Document.

There may only be one Connection Point class for a given Connection Point Identification.

## 3.4.4.1 IDENTIFICATION – CODINGScheme

ACTION	DESCRIPTION
<b>Definition of element</b>	The identification of a connection point.
<b>Description</b>	The identification of a connection point within a System Operator's system. The codification scheme used for the coded identification is indicated by the coding scheme attribute and shall indicate the code "305" for an EIC measurement point code or the code "ZSO" for a System Operator code.
<b>Size</b>	The maximum length of the connection point identification is 35 alphanumeric characters. The maximum length of the coding scheme is 3 alphanumeric characters.
<b>Applicability</b>	Both the connection point identification and the coding scheme are mandatory.
<b>Dependence requirements</b>	None.

## 3.4.4.2 MEASUREUNIT.CODE

ACTION	DESCRIPTION
<b>Definition of element</b>	The unit of measure which is applied to all the quantities in the time series of the document.
<b>Description</b>	The unit of measurement used for all the quantities expressed within a time series. The following are the codes recommended for use: KW1 = Kilowatt-hour per hour (kWh/h) KW2 = Kilowatt-hour per day (kWh/d) A15 = Kilogram per hour (Kg/h) (Reference Edig@s UnitOfMeasure code list)
<b>Size</b>	The maximum length of this information is 3 alphanumeric characters.
<b>Applicability</b>	This information is mandatory.
<b>Dependence requirements</b>	None.

### 3.4.5 RULES GOVERNING THE NOMINATIONTYPE CLASS

The Nomination Type class is used to identify if the time series is being provided as a single sided nomination or a double sided nomination.

#### 3.4.5.1 TYPE

ACTION	DESCRIPTION
<b>Definition of element</b>	The identification of whether the underlying information refers to a single sided nomination or a double sided nomination.
<b>Description</b>	The type indicating a single sided or a double sided nomination. A01 = Single sided A02 = Double sided (Reference Edig@s NominationType code list)
<b>Size</b>	The maximum length of this information is 3 alphanumeric characters.
<b>Applicability</b>	This information is mandatory.
<b>Dependence requirements</b>	None.

### 3.4.6 RULES GOVERNING THE ACCOUNT CLASS

The Account class is used to identify a Shipper pair. In the case of End User schedules, the external account attribute is not used.

#### 3.4.6.1 INTERNALACCOUNT – CODINGScheme

ACTION	DESCRIPTION
<b>Definition of element</b>	The identification of an internal account that is defined by the recipient System Operator.
<b>Description</b>	The identification of an internal account that is defined by the recipient System Operator. The codification scheme used for the coded identification is indicated by the coding scheme attribute and shall indicate the code "ZSO" for a System Operator code or "305" for an EIC area code.
<b>Size</b>	The maximum length of the internal account is 35 alphanumeric characters. The maximum length of the coding scheme is 3 alphanumeric characters.
<b>Applicability</b>	Both the internal account and the coding scheme are mandatory.
<b>Dependence requirements</b>	None.

#### 3.4.6.2 INTERNALACCOUNTTSO - CODINGScheme

ACTION	DESCRIPTION
<b>Definition of element</b>	Identification of the System Operator that created the internal account identification.
<b>Description</b>	The System Operator that created the internal account identification. The codification scheme used for the coded identification is indicated by the coding scheme attribute and shall indicate the code "305" for an EIC party code.
<b>Size</b>	The maximum length of the identification is 16 alphanumeric characters. The maximum length of the coding scheme code is 3 alphanumeric characters.
<b>Applicability</b>	Both the identification and the coding scheme are dependent.
<b>Dependence requirements</b>	The InternalAccountTso is required if the identification of the System Operator that created the account is ambiguous.

## 314 3.4.6.3 EXTERNALACCOUNT – CODINGScheme

ACTION	DESCRIPTION
<b>Definition of element</b>	The identification of the external account that is defined by the adjacent System Operator.
<b>Description</b>	The identification of the external account that is defined by the adjacent System Operator. The codification scheme used for the coded identification is indicated by the coding scheme attribute and shall indicate the code "ZSO" for a System Operator code or "305" for an EIC area code.
<b>Size</b>	The maximum length of the external account is 35 alphanumeric characters. The maximum length of the coding scheme is 3 alphanumeric characters.
<b>Applicability</b>	This information is dependent.
<b>Dependence requirements</b>	The external account is not always used in the case of End User schedules.

## 315 3.4.6.4 EXTERNALACCOUNTTso - CODINGScheme

ACTION	DESCRIPTION
<b>Definition of element</b>	Identification of the System Operator that created the external account identification.
<b>Description</b>	The System Operator that created the external account identification. The codification scheme used for the coded identification is indicated by the coding scheme attribute and shall indicate the code "305" for an EIC party code.
<b>Size</b>	The maximum length of the identification is 16 alphanumeric characters. The maximum length of the coding scheme code is 3 alphanumeric characters.
<b>Applicability</b>	Both the identification and the coding scheme are dependent.
<b>Dependence requirements</b>	The ExternalAccountTso is required if the identification of the System Operator that created the account is ambiguous.

**3.4.7 RULES GOVERNING THE PERIOD CLASS**

There must always be a Period class. A time interval instance value (e.g. 2012-05-23T01:00Z/2012-05-23T02:00Z) may only appear once within an Account class.

The Period shall cover one or multiple intervals of a whole gas day.

**3.4.7.1 TIMEINTERVAL**

ACTION	DESCRIPTION
<b>Definition of element</b>	The start and end date and time of the time interval of the period in question.
<b>Description</b>	This information provides the start and end date and time of the period being reported. The time interval shall cover a whole gas day.
<b>Size</b>	Refer to section 1.2 of the Edig@s General Guidelines for information on the attribute structure.
<b>Applicability</b>	This information is mandatory.
<b>Dependence requirements</b>	None.

**3.4.7.2 DIRECTION.CODE**

ACTION	DESCRIPTION
<b>Definition of element</b>	Identifies how the energy flow is to be seen from the perspective of the System Operator's area.
<b>Description</b>	This identifies the direction of the energy flow. Permitted codes are: Z02 = Input Z03 = Output (Reference Edig@s GasDirectionType code list)
<b>Size</b>	The maximum length of this information is 3 alphanumeric characters.
<b>Applicability</b>	This information is mandatory.
<b>Dependence requirements</b>	None.

**3.4.7.3 QUANTITY.AMOUNT**

ACTION	DESCRIPTION
<b>Definition of element</b>	The quantity for the connection point within the time interval in question.
<b>Description</b>	This information defines the quantity for the connection point within the time interval period. A decimal point value may be used to express values that are inferior to the defined unit of measurement. The decimal mark that separates the digits forming the integral part of a number from those forming the fractional part (ISO 6093) shall always be a period ("."). All quantities are non-signed values.
<b>Size</b>	The maximum length of this information is 17 numeric characters (decimal mark included). All leading zeros are to be suppressed. The number of decimal places identifying the fractional part of the quantity depends on local market rules.
<b>Applicability</b>	This information is mandatory.
<b>Dependence requirements</b>	None.

**3.4.7.4 PRIORITY\_STATUS.CODE**

ACTION	DESCRIPTION
<b>Definition of element</b>	The priority status of given quantity within a time interval.
<b>Description</b>	This information provides the priority status of the quantity for the time interval being reported. Only Interruptible Priority values as defined in the Edig@s codelist are permitted (codes from 30G on where the name corresponds to "Interruptible priority xx" where XX equals the interruptible priority number). (Reference Edig@s StatusType code list)
<b>Size</b>	The maximum length of this information is 3 alphanumeric characters.
<b>Applicability</b>	This information is dependent.
<b>Dependence requirements</b>	This is only used depending on local market rules.

**3.4.8 RULES GOVERNING THE DECOMPOSITION\_QUANTITY CLASS**

A Decomposition\_Quantity class is only used whenever the quantities nominated have to be distributed by type of contract to which they are being nominated. This is used only in the case where local market rules require it and is restricted to LNG Connection Points.

The sum of the quantities in the Decomposition\_Quantity class instances must correspond to the total quantity that is being nominated in the Period class.

The unit of measure must be identical to the unit of measure identified in the Connection Point class.

The direction must be identical to the direction identified in the Period class.

**3.4.8.1 TYPE**

ACTION	DESCRIPTION
<b>Definition of element</b>	The type of the contract that the quantity is being nominated from.
<b>Description</b>	This information provides the type of the contract that the quantity is being extracted from. The current types permitted for this code are: ZXD = Firm ZXE = Makeup ZXF = Interruptible ZXG = Conditional (Reference Edig@s QuantityTypeType code list)
<b>Size</b>	The maximum length of this information is 3 alphanumeric characters.
<b>Applicability</b>	This information is mandatory.
<b>Dependence requirements</b>	None.

**3.4.8.2 AMOUNT**

ACTION	DESCRIPTION
<b>Definition of element</b>	The quantity that is being used for the type of contract in question.
<b>Description</b>	This information provides the quantity that is being extracted from a given type of contract. A decimal point value may be used to express values that are inferior to the defined unit of measurement. The decimal mark that separates the digits forming the integral part of a number from those forming the fractional part (ISO 6093) shall always be a period ("."). All quantities are non-signed values.
<b>Size</b>	The maximum length of this information is 17 numeric characters (decimal mark included). All leading zeros are to be suppressed. The number of decimal places identifying the fractional part of the quantity depends on local market rules.
<b>Applicability</b>	This information is mandatory.
<b>Dependence requirements</b>	None.

### 3.5 CONTEXTUAL MODEL FOR DELIVERY ORDER DOCUMENT (DELORD)

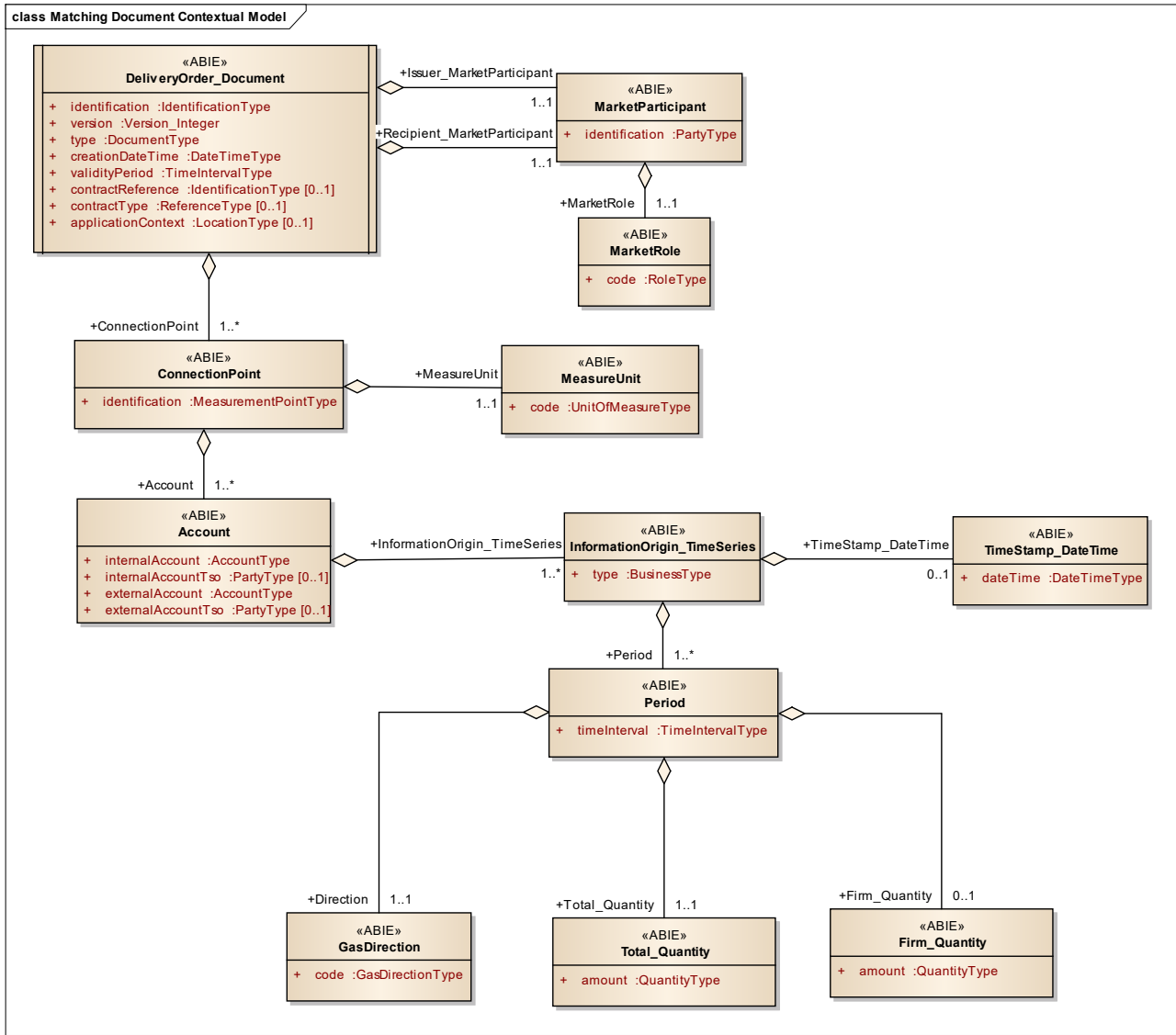
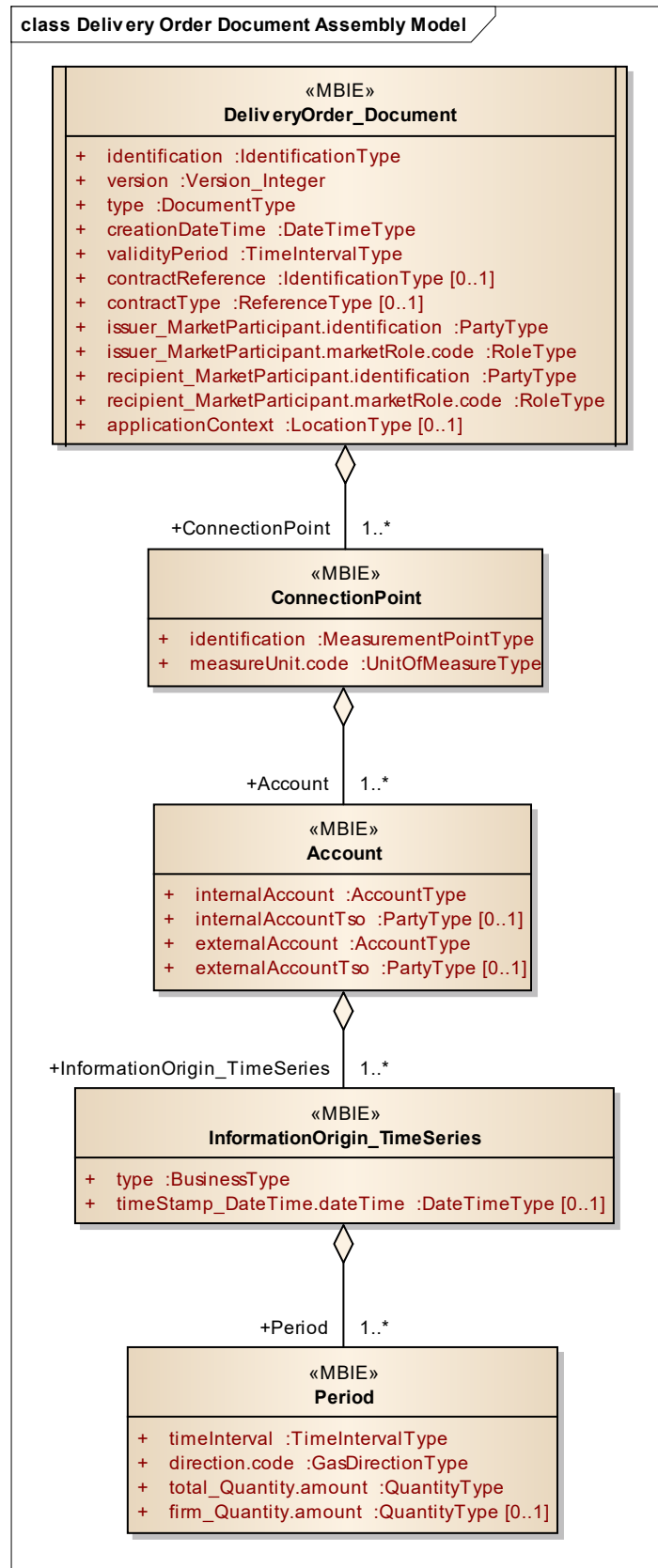


FIGURE 11: DELIVERY ORDER DOCUMENT CONTEXTUAL MODEL



## 338 3.5.1 INFORMATION MODEL STRUCTURE

339 340 **FIGURE 12: DELIVERY ORDER DOCUMENT ASSEMBLY MODEL**

### 3.5.2 INFORMATION MODEL DESCRIPTION

A Delivery Order Document is used by coordinating System Operators to exchange Shipper nomination information.

### 3.5.3 RULES GOVERNING THE DELIVERY ORDER DOCUMENT CLASS

A document is uniquely identified by:

- The identification of the document
- The issuer identification
- The identification of the version.

#### 3.5.3.1 IDENTIFICATION

ACTION	DESCRIPTION
<b>Definition of element</b>	Identification of the document describing the Delivery Order Document.
<b>Description</b>	A Delivery Order Document must have a unique identification assigned by the issuer of the document to be sent to a recipient for a given validity period. The issuer must guarantee that this identification is unique over time.
<b>Size</b>	The identification of a Delivery Order Document may not exceed 35 alphanumeric characters.
<b>Applicability</b>	This information is mandatory.
<b>Dependence requirements</b>	None.

#### 3.5.3.2 VERSION

ACTION	DESCRIPTION
<b>Definition of element</b>	Version of the document being sent.
<b>Description</b>	The document version is used to identify a given version of a Delivery Order Document. The first version number for a given document identification shall normally be 1. The document version number must be incremented for each retransmission of a document that contains changes to the previous version. The receiving system shall only accept a document with a version number which is greater than the previous version number of the same document.
<b>Size</b>	A version number may not exceed 3 numeric characters.
<b>Applicability</b>	This information is mandatory.
<b>Dependence requirements</b>	None.

#### 3.5.3.3 TYPE

ACTION	DESCRIPTION
<b>Definition of element</b>	The type of the document being sent.
<b>Description</b>	This identifies the type of Delivery Order Document that is being sent. The following types of Delivery Order Document are currently permitted: 26G = Callup notice. A message to indicate the quantities that the System Operator is able to transmit or process. ANC = Forwarded single sided nomination. A message to provide single sided nomination information to an adjacent System Operator. (Reference Edig@s DocumentType code list).
<b>Size</b>	A type may not exceed 3 alphanumeric characters.
<b>Applicability</b>	This information is mandatory.
<b>Dependence requirements</b>	None.

## 352 3.5.3.4 CREATIONDATETIME

ACTION	DESCRIPTION
<b>Definition of element</b>	Date and time of the creation of the document.
<b>Description</b>	The date and time that the document was prepared for transmission by the application of the issuer.
<b>Size</b>	Refer to section 1.2 of the Edig@s General Guidelines for information on the attribute structure.
<b>Applicability</b>	This information is mandatory.
<b>Dependence requirements</b>	None.

## 353 3.5.3.5 VALIDITYPERIOD

ACTION	DESCRIPTION
<b>Definition of element</b>	The start and end date and time of the period of validity covered in the document.
<b>Description</b>	This information provides the start and end date and time of the period of validity of the document.
<b>Size</b>	Refer to section 1.2 of the Edig@s General Guidelines for information on the attribute structure.
<b>Applicability</b>	This information is mandatory.
<b>Dependence requirements</b>	None.

## 354 3.5.3.6 CONTRACTREFERENCE

ACTION	DESCRIPTION
<b>Definition of element</b>	Identification of the contract reference that governs the documents contents.
<b>Description</b>	The contract reference identifies the interconnection agreement under which the conditions of the content and transmission of the document have been agreed.
<b>Size</b>	The maximum length of the contract reference identification is 35 alphanumeric characters.
<b>Applicability</b>	This information is dependent.
<b>Dependence requirements</b>	The information is dependent on mutual agreement between the involved parties.

## 355 3.5.3.7 CONTRACTTYPE

ACTION	DESCRIPTION
<b>Definition of element</b>	Identification of the type of contract covering the document.
<b>Description</b>	The contract type identifies the nature of the contract defined in the document. Refer to the Edigas ReferenceType code list for the list of valid codes.
<b>Size</b>	The maximum length of the contract type is 3 alphanumeric characters.
<b>Applicability</b>	This information is dependent.
<b>Dependence requirements</b>	This information is used depending on local market rules.

## 356 3.5.3.8 ISSUER\_MARKETPARTICIPANT.IDENTIFICATION – CODINGScheme

ACTION	DESCRIPTION
<b>Definition of element</b>	Identification of the party who has issued the document.
<b>Description</b>	The issuer of the document is identified by a unique coded identification. This code identifies the party that is the "owner" of the information being transmitted in the document. The codification scheme used for the coded identification is indicated by the coding scheme attribute and shall indicate the code "305" for an EIC party code.
<b>Size</b>	The maximum length of an issuer's identification is 16 alphanumeric characters. The maximum length of the coding scheme code is 3 alphanumeric characters.
<b>Applicability</b>	Both the identification and the coding scheme are mandatory.
<b>Dependence requirements</b>	None.

## 3.5.3.9 ISSUER\_MARKETPARTICIPANT.MARKETROLE.CODE

ACTION	DESCRIPTION
<b>Definition of element</b>	Identification of the role that the party who has issued the document is playing.
<b>Description</b>	The role being played by the issuer of the document for this transmission. The following role is permitted for this document: ZSO = System Operator. (Reference Edig@s RoleType code list).
<b>Size</b>	The maximum length of this information is 3 alphanumeric characters.
<b>Applicability</b>	This information is mandatory.
<b>Dependence requirements</b>	None.

## 3.5.3.10 RECIPIENT\_MARKETPARTICIPANT.IDENTIFICATION – CODINGScheme

ACTION	DESCRIPTION
<b>Definition of element</b>	Identification of the party who is receiving the document.
<b>Description</b>	The recipient of the document is identified by a unique coded identification. The codification scheme used for the coded identification is indicated by the coding scheme attribute and shall indicate the code "305" for an EIC party code.
<b>Size</b>	The maximum length of a recipient's identification is 16 alphanumeric characters. The maximum length of the coding scheme code is 3 alphanumeric characters.
<b>Applicability</b>	Both the identification and the coding scheme are mandatory.
<b>Dependence requirements</b>	None.

## 3.5.3.11 RECIPIENT\_MARKETPARTICIPANT.MARKETROLE.CODE

ACTION	DESCRIPTION
<b>Definition of element</b>	Identification of the role that the party who receives the document is playing.
<b>Description</b>	The role being played by the recipient of the document for this transmission. The following role is permitted for this document: ZSO = System Operator (Reference Edig@s RoleType code list).
<b>Size</b>	The maximum length of this information is 3 alphanumeric characters.
<b>Applicability</b>	This information is mandatory.
<b>Dependence requirements</b>	None.

## 3.5.3.12 APPLICATIONCONTEXT – CODINGScheme

ACTION	DESCRIPTION
<b>Definition of element</b>	The identification of a particular context that is significant to the recipient.
<b>Description</b>	The Application Context is used to identify a particular context (location, application, etc.) that is relevant to the recipient of the document. The codification scheme used for the coded identification is indicated by the coding scheme attribute and shall indicate the code "305" for an EIC Location code.
<b>Size</b>	The maximum length of an application context's identification is 16 alphanumeric characters. The maximum length of the coding scheme code is 3 alphanumeric characters.
<b>Applicability</b>	This information is dependent.
<b>Dependence requirements</b>	The information is only provided when there is bi lateral agreement between the parties.

### 3.5.4 RULES GOVERNING THE CONNECTION POINT CLASS

There may be one to many connection points in a Delivery Order Document.

#### 3.5.4.1 IDENTIFICATION – CODINGScheme

ACTION	DESCRIPTION
<b>Definition of element</b>	The identification of a connection point.
<b>Description</b>	The identification of a connection point within a System Operator's system. The codification scheme used for the coded identification is indicated by the coding scheme attribute and shall indicate the code "305" for an EIC measurement point code, or the code "ZSO" for a System Operator code.
<b>Size</b>	The maximum length of the connection point identification is 35 alphanumeric characters. The maximum length of the coding scheme is 3 alphanumeric characters.
<b>Applicability</b>	Both the connection point identification and the coding scheme are mandatory.
<b>Dependence requirements</b>	None.

#### 3.5.4.2 MEASUREUNIT.CODE

ACTION	DESCRIPTION
<b>Definition of element</b>	The unit of measure which is applied to all the quantities in the time series of the document.
<b>Description</b>	The unit of measurement used for all the quantities expressed within a time series. The following are the codes recommended for use: KW1 = Kilowatt-hour per hour (kWh/h) KW2 = Kilowatt-hour per day (kWh/d) A15 = Kilogram per hour (Kg/h) (Reference Edig@s UnitOfMeasure code list).
<b>Size</b>	The maximum length of this information is 3 alphanumeric characters.
<b>Applicability</b>	This information is mandatory.
<b>Dependence requirements</b>	None.

### 3.5.5 RULES GOVERNING THE ACCOUNT CLASS

The Account class is used to identify the shipper pair relative to the nomination.

#### 3.5.5.1 INTERNALACCOUNT – CODINGScheme

ACTION	DESCRIPTION
<b>Definition of element</b>	The identification of the internal account that is defined by the transmitting System Operator.
<b>Description</b>	The identification of the internal account within a System Operator's system that is relevant to the nomination. The codification scheme used for the coded identification is indicated by the coding scheme attribute and shall indicate the code "ZSO" for a System Operator code or "305" for an EIC area code.
<b>Size</b>	The maximum length of the internal shipper account is 35 alphanumeric characters. The maximum length of the coding scheme is 3 alphanumeric characters.
<b>Applicability</b>	Both the internal account and the coding scheme are mandatory.
<b>Dependence requirements</b>	None.

## 3.5.5.2 INTERNALACCOUNTTSO - CODINGScheme

ACTION	DESCRIPTION
<b>Definition of element</b>	Identification of the System Operator that created the internal account identification.
<b>Description</b>	The System Operator that created the internal account identification. The codification scheme used for the coded identification is indicated by the coding scheme attribute and shall indicate the code "305" for an EIC party code.
<b>Size</b>	The maximum length of the identification is 16 alphanumeric characters. The maximum length of the coding scheme code is 3 alphanumeric characters.
<b>Applicability</b>	Both the identification and the coding scheme are dependent.
<b>Dependence requirements</b>	The InternalAccountTso is required if the identification of the System Operator that created the account is ambiguous.

## 3.5.5.3 EXTERNALACCOUNT – CODINGScheme

ACTION	DESCRIPTION
<b>Definition of element</b>	The identification of the external account that is defined by the adjacent System Operator.
<b>Description</b>	The identification of the external account that is defined by the adjacent System Operator that has been used in the nomination. The codification scheme used for the coded identification is indicated by the coding scheme attribute and shall indicate the code "ZSO" for a System Operator code or "305" for an EIC area code.
<b>Size</b>	The maximum length of the external shipper account is 35 alphanumeric characters. The maximum length of the coding scheme is 3 alphanumeric characters.
<b>Applicability</b>	Both the External Account and the coding scheme are mandatory.
<b>Dependence requirements</b>	None.

## 3.5.5.4 EXTERNALACCOUNTTSO - CODINGScheme

ACTION	DESCRIPTION
<b>Definition of element</b>	Identification of the System Operator that created the external account identification.
<b>Description</b>	The System Operator that created the external account identification. The codification scheme used for the coded identification is indicated by the coding scheme attribute and shall indicate the code "305" for an EIC party code.
<b>Size</b>	The maximum length of the identification is 16 alphanumeric characters. The maximum length of the coding scheme code is 3 alphanumeric characters.
<b>Applicability</b>	Both the identification and the coding scheme are dependent.
<b>Dependence requirements</b>	The ExternalAccountTso is required if the identification of the System Operator that created the account is ambiguous.

### 3.5.6 RULES GOVERNING THE INFORMATION ORIGIN CLASS

There must always be an Information Origin TimeSeries class.

#### 3.5.6.1 TYPE

ACTION	DESCRIPTION
<b>Definition of element</b>	The identification of the origin of the information in the time series
<b>Description</b>	The identification of the source of the information that is provided in the Period class and its dependents The following Types are permitted: 12G = Accepted by System Operator 14G = Processed by System Operator <b>Note:</b> 14G is mandatory in the Callup Notice. 12G is mandatory in the forwarded single sided nomination. 12G is used in the callup notice when initial nomination values are required to satisfy specific market rules. (Reference Edig@s BusinessType code list).
<b>Size</b>	The maximum length of the type is 3 alphanumeric characters.
<b>Applicability</b>	This information is mandatory.
<b>Dependence requirements</b>	None.

#### 3.5.6.2 TIMESTAMP\_DATETIME.DATETIME

ACTION	DESCRIPTION
<b>Definition of element</b>	Date and time timestamp of the reception of a single sided nomination by an active System Operator.
<b>Description</b>	The date and time timestamp that an active System Operator recorded for a single sided nomination.
<b>Size</b>	Refer to section 1.2 of the Edig@s General Guidelines for information on the attribute structure.
<b>Applicability</b>	This information is dependent.
<b>Dependence requirements</b>	The timestamp is only required in the case where a single sided nomination is forwarded to the passive System Operator and it is required by the passive System Operator.

### 3.5.7 RULES GOVERNING THE PERIOD CLASS

There must always be a Period class. A time interval instance value (e.g. 2012-05-23T01:00Z/2012-05-23T02:00Z) may only appear once within an Account class.

The Period shall cover one or multiple intervals of a whole gas day.

#### 3.5.7.1 TIMEINTERVAL

ACTION	DESCRIPTION
<b>Definition of element</b>	The start and end date and time of the time interval of the period in question.
<b>Description</b>	This information provides the start and end date and time of the period being reported.
<b>Size</b>	Refer to section 1.2 of the Edig@s General Guidelines for information on the attribute structure.
<b>Applicability</b>	This information is mandatory.
<b>Dependence requirements</b>	None.

## 3.5.7.2 DIRECTION.CODE

ACTION	DESCRIPTION
<b>Definition of element</b>	Identifies how the energy flow is to be seen from the perspective of the transmitting System Operator's area.
<b>Description</b>	This identifies the direction of the energy flow. Permitted codes are: Z02 = Input Z03 = Output (Reference Edig@s GasDirectionType code list).
<b>Size</b>	The maximum length of this information is 3 alphanumeric characters.
<b>Applicability</b>	This information is mandatory.
<b>Dependence requirements</b>	None.

## 3.5.7.3 TOTAL\_QUANTITY.AMOUNT

ACTION	DESCRIPTION
<b>Definition of element</b>	The total quantity for the connection point within the time interval in question.
<b>Description</b>	This information defines the total quantity for the connection point within the time interval period. A decimal point value may be used to express values that are inferior to the defined unit of measurement. The decimal mark that separates the digits forming the integral part of a number from those forming the fractional part (ISO 6093) shall always be a period ("."). All quantities are non-signed values.
<b>Size</b>	The maximum length of this information is 17 numeric characters (decimal mark included). All leading zeros are to be suppressed. The number of decimal places identifying the fractional part of the quantity depends on local market rules.
<b>Applicability</b>	This information is mandatory.
<b>Dependence requirements</b>	None.

## 3.5.7.4 FIRM\_QUANTITY.AMOUNT

ACTION	DESCRIPTION
<b>Definition of element</b>	The firm processed quantity for the connection point within the time interval in question.
<b>Description</b>	This information defines the firm processed quantity for the connection point within the time interval period. This represents a part of the total quantity. A decimal point value may be used to express values that are inferior to the defined unit of measurement. The decimal mark that separates the digits forming the integral part of a number from those forming the fractional part (ISO 6093) shall always be a period ("."). All quantities are non-signed values.
<b>Size</b>	The maximum length of this information is 17 numeric characters (decimal mark included). All leading zeros are to be suppressed. The number of decimal places identifying the fractional part of the quantity depends on local market rules.
<b>Applicability</b>	This information is dependent.
<b>Dependence requirements</b>	This attribute may only be used in the case of an information origin "14G" and where specific capacity allocation rules require this information.



### 3.6 CONTEXTUAL MODEL FOR THE DELIVERY RESPONSE DOCUMENT (DELRES)

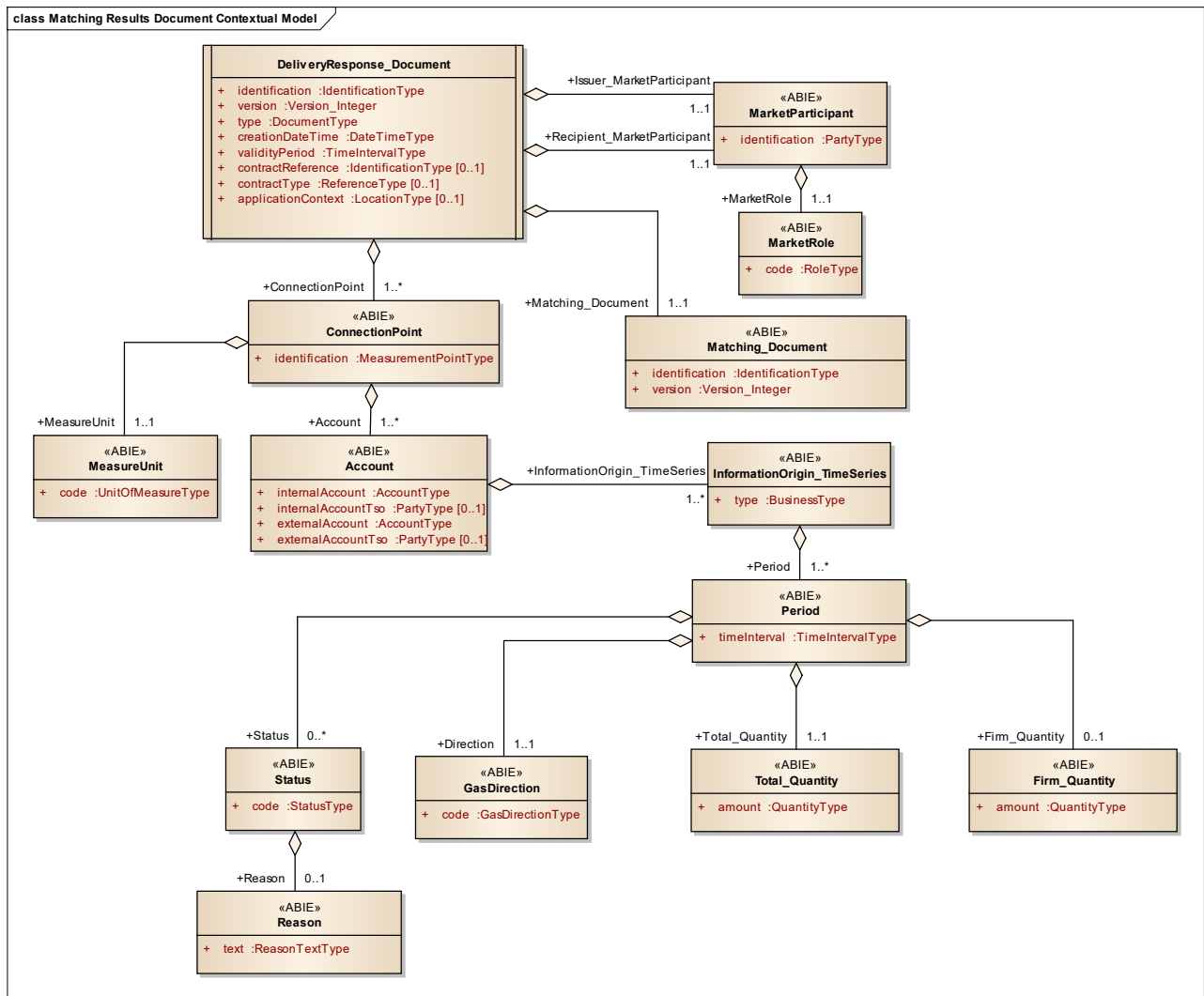


FIGURE 13: DELIVERY RESPONSE DOCUMENT CONTEXTUAL MODEL

3.6.1 INFORMATION MODEL STRUCTURE

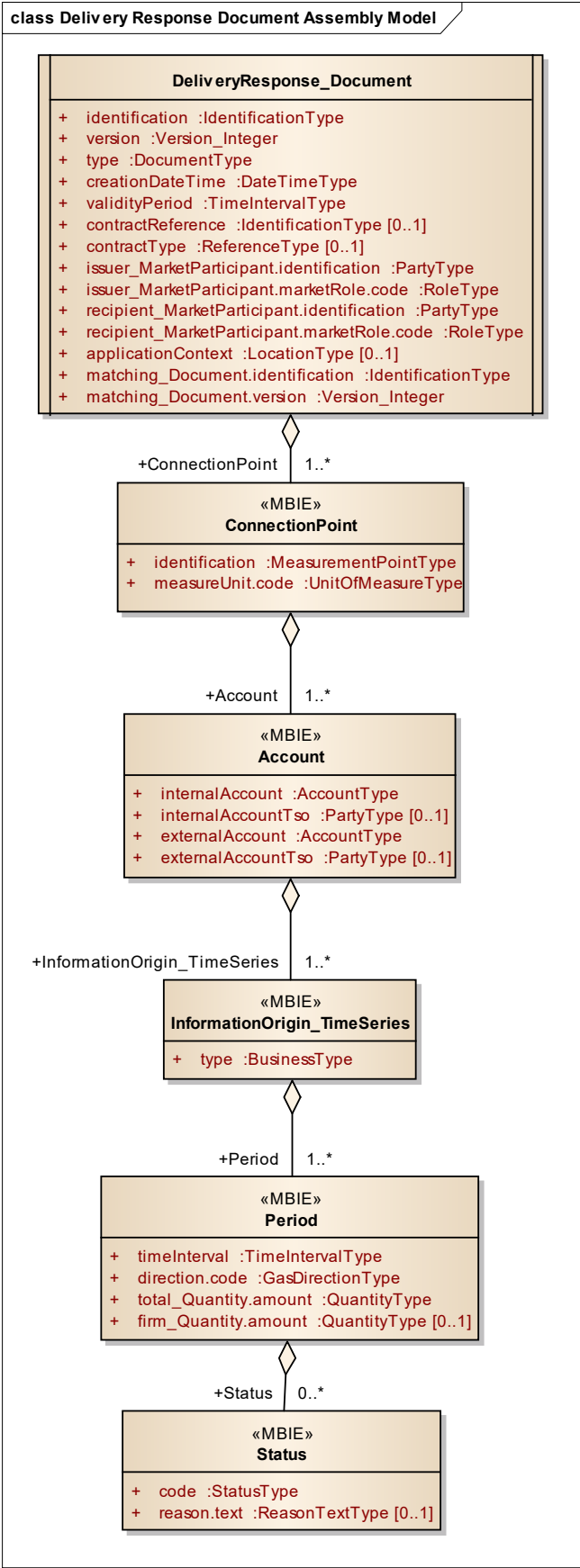


FIGURE 14: DELIVERY RESPONSE DOCUMENT ASSEMBLY MODEL

### 3.6.2 INFORMATION MODEL DESCRIPTION

A Delivery Response Document is used by a System Operator to send a Delivery Order Response Document to a System Operator in reply to a System Operator Delivery Order Callup notice Document.

### 3.6.3 RULES GOVERNING THE DELIVERY RESPONSE DOCUMENT CLASS

A document is uniquely identified by:

- The identification of the document
- The issuer identification
- The identification of the version.

#### 3.6.3.1 IDENTIFICATION

ACTION	DESCRIPTION
<b>Definition of element</b>	Identification of the document describing the Delivery Response Document.
<b>Description</b>	A Delivery Response Document must have a unique identification assigned by the issuer of the document to be sent to a recipient for a given validity period. The issuer must guarantee that this identification is unique over time.
<b>Size</b>	The identification of a Delivery Response Document may not exceed 35 alphanumeric characters.
<b>Applicability</b>	This information is mandatory.
<b>Dependence requirements</b>	None.

#### 3.6.3.2 VERSION

ACTION	DESCRIPTION
<b>Definition of element</b>	Version of the document being sent.
<b>Description</b>	The document version is used to identify a given version of a Delivery Response Document. The first version number for a given document identification shall normally be 1. The document version number must be incremented for each retransmission of a document that contains changes to the previous version. The receiving system shall only accept a document with a version number which is greater than the previous version number of the same document.
<b>Size</b>	A version number may not exceed 3 numeric characters.
<b>Applicability</b>	This information is mandatory.
<b>Dependence requirements</b>	None.

#### 3.6.3.3 TYPE

ACTION	DESCRIPTION
<b>Definition of element</b>	The type of the document being sent.
<b>Description</b>	This identifies the type of Delivery Response Document that is being sent. The following type of Delivery Response Document is currently permitted: 27G = Callup response: A message used by a matching System Operator to inform the adjacent System Operator of the Shipper nominated values matching results. (Reference Edig@s DocumentType code list).
<b>Size</b>	A type may not exceed 3 alphanumeric characters.
<b>Applicability</b>	This information is mandatory.
<b>Dependence requirements</b>	None.

## 3.6.3.4 CREATIONDATETIME

ACTION	DESCRIPTION
<b>Definition of element</b>	Date and time of the creation of the document.
<b>Description</b>	The date and time that the document was prepared for transmission by the application of the issuer.
<b>Size</b>	Refer to section 1.2 of the Edig@s General Guidelines for information on the attribute structure.
<b>Applicability</b>	This information is mandatory.
<b>Dependence requirements</b>	None.

## 3.6.3.5 VALIDITYPERIOD

ACTION	DESCRIPTION
<b>Definition of element</b>	The start and end date and time of the period of validity covered in the document.
<b>Description</b>	This information provides the start and end date and time of the period of validity of the document.
<b>Size</b>	Refer to section 1.2 of the Edig@s General Guidelines for information on the attribute structure.
<b>Applicability</b>	This information is mandatory.
<b>Dependence requirements</b>	None.

## 3.6.3.6 CONTRACTREFERENCE

ACTION	DESCRIPTION
<b>Definition of element</b>	Identification of the contract reference that governs the documents contents.
<b>Description</b>	The contract reference identifies the interconnection agreement under which the conditions of the content and transmission of the document have been agreed.
<b>Size</b>	The maximum length of the contract reference identification is 35 alphanumeric characters.
<b>Applicability</b>	This information is dependent.
<b>Dependence requirements</b>	The information is only provided if it is provided in the related Delivery Order Document.

## 3.6.3.7 CONTRACTTYPE

ACTION	DESCRIPTION
<b>Definition of element</b>	Identification of the type of contract covering the document.
<b>Description</b>	The contract type identifies the nature of the contract defined in the document. Refer to the Edigas ReferenceType codelist for the list of valid codes.
<b>Size</b>	The maximum length of the contract type is 3 alphanumeric characters.
<b>Applicability</b>	This information is dependent.
<b>Dependence requirements</b>	The information is only provided if it is provided in the related Delivery Order Document.

## 3.6.3.8 ISSUER\_MARKETPARTICIPANT.IDENTIFICATION – CODINGScheme

ACTION	DESCRIPTION
<b>Definition of element</b>	Identification of the party who has issued the document.
<b>Description</b>	The issuer of the document is identified by a unique coded identification. This code identifies the party that is the "owner" of the information being transmitted in the document. The codification scheme used for the coded identification is indicated by the coding scheme attribute and shall indicate the code "305" for an EIC party code.
<b>Size</b>	The maximum length of an issuer's identification is 16 alphanumeric characters. The maximum length of the coding scheme code is 3 alphanumeric characters.
<b>Applicability</b>	Both the identification and the coding scheme are mandatory.
<b>Dependence requirements</b>	None.

## 3.6.3.9 ISSUER\_MARKETPARTICIPANT.MARKETROLE.CODE

ACTION	DESCRIPTION
<b>Definition of element</b>	Identification of the role that the party who has issued the document is playing.
<b>Description</b>	The role being played by the issuer of the document for this transmission. The following role is permitted for this document: ZSO = System Operator (Reference Edig@s RoleType code list).
<b>Size</b>	The maximum length of this information is 3 alphanumeric characters.
<b>Applicability</b>	This information is mandatory.
<b>Dependence requirements</b>	None.

## 3.6.3.10 RECIPIENT\_MARKETPARTICIPANT.IDENTIFICATION – CODINGScheme

ACTION	DESCRIPTION
<b>Definition of element</b>	Identification of the party who is receiving the document.
<b>Description</b>	The recipient of the document is identified by a unique coded identification. The codification scheme used for the coded identification is indicated by the coding scheme attribute and shall indicate the code "305" for an EIC Party code.
<b>Size</b>	The maximum length of a recipient's identification is 16 alphanumeric characters. The maximum length of the coding scheme code is 3 alphanumeric characters.
<b>Applicability</b>	Both the identification and the coding scheme are mandatory.
<b>Dependence requirements</b>	None.

## 3.6.3.11 RECIPIENT\_MARKETPARTICIPANT.MARKETROLE.CODE

ACTION	DESCRIPTION
<b>Definition of element</b>	Identification of the role that the party who receives the document is playing.
<b>Description</b>	The role being played by the recipient of the document for this transmission. The following role is permitted for this document: ZSO = System Operator (Reference Edig@s RoleType code list).
<b>Size</b>	The maximum length of this information is 3 alphanumeric characters.
<b>Applicability</b>	This information is mandatory.
<b>Dependence requirements</b>	None.

## 3.6.3.12 APPLICATIONCONTEXT – CODINGScheme

ACTION	DESCRIPTION
<b>Definition of element</b>	The identification of a particular context that is significant to the recipient.
<b>Description</b>	The Application Context is used to identify a particular context (location, application, etc.) that is relevant to the recipient of the document. The codification scheme used for the coded identification is indicated by the coding scheme attribute and shall indicate the code "305" for an EIC Location code.
<b>Size</b>	The maximum length of an application context's identification is 16 alphanumeric characters. The maximum length of the coding scheme code is 3 alphanumeric characters.
<b>Applicability</b>	This information is dependent.
<b>Dependence requirements</b>	The information is only provided when there is bi lateral agreement between the parties.

## 3.6.3.13 MATCHING\_DOCUMENT.IDENTIFICATION

ACTION	DESCRIPTION
<b>Definition of element</b>	The identification of the Delivery Order Document sent by the recipient.
<b>Description</b>	A Delivery Order Document must have been previously sent by the recipient. If no initialising electronic XML document has been received prior to the emission of the current document or if it is based on the contents of a paper document then this attribute shall contain the word "DEFAULT"
<b>Size</b>	The identification of a Delivery Order Response Document may not exceed 35 alphanumeric characters.
<b>Applicability</b>	This information is mandatory.
<b>Dependence requirements</b>	None.

## 3.6.3.14 MATCHING\_DOCUMENT.VERSION

ACTION	DESCRIPTION
<b>Definition of element</b>	The version of the Delivery Order Document sent by the recipient.
<b>Description</b>	The version of the Delivery Order Document sent by the recipient. If no electronic XML document is used then the <u>matching_Document.Version</u> shall contain the number "1"
<b>Size</b>	A version number may not exceed 3 numeric characters.
<b>Applicability</b>	This information is mandatory.
<b>Dependence requirements</b>	None.

### 3.6.4 RULES GOVERNING THE CONNECTION POINT CLASS

There may be one to many connection points in a Delivery Response Document.

#### 3.6.4.1 IDENTIFICATION – CODINGScheme

ACTION	DESCRIPTION
<b>Definition of element</b>	The identification of a connection point.
<b>Description</b>	The identification of a connection point within a System Operator's system. The codification scheme used for the coded identification is indicated by the coding scheme attribute and shall indicate the code "305" for an EIC measurement point code or the code "ZSO" for a System Operator code.
<b>Size</b>	The maximum length of the connection point identification is 35 alphanumeric characters. The maximum length of the coding scheme is 3 alphanumeric characters.
<b>Applicability</b>	Both the connection point identification and the coding scheme are mandatory.
<b>Dependence requirements</b>	None.

#### 3.6.4.2 MEASUREUNIT.CODE

ACTION	DESCRIPTION
<b>Definition of element</b>	The unit of measure which is applied to all the quantities in the time series of the document.
<b>Description</b>	The unit of measurement used for all the quantities expressed within a time series. The following are the codes recommended for use: KW1 = Kilowatt-hour per hour (kWh/h) KW2 = Kilowatt-hour per day (kWh/d) A15 = Kilogram per hour (Kg/h) (Reference Edig@s UnitOfMeasureType code list).
<b>Size</b>	The maximum length of this information is 3 alphanumeric characters.
<b>Applicability</b>	This information is mandatory.
<b>Dependence requirements</b>	None.

### 3.6.5 RULES GOVERNING THE ACCOUNT CLASS

The Account class is used to identify the shipper pair relative to the nomination.

#### 3.6.5.1 INTERNALACCOUNT – CODINGScheme

ACTION	DESCRIPTION
<b>Definition of element</b>	The identification of the internal account that is defined by the transmitting System Operator.
<b>Description</b>	The identification of the internal account within a System Operator's system that is relevant to the nomination. The codification scheme used for the coded identification is indicated by the coding scheme attribute and shall indicate the code "ZSO" for a System Operator code or "305" for an EIC area code..
<b>Size</b>	The maximum length of the internal account is 35 alphanumeric characters. The maximum length of the coding scheme is 3 alphanumeric characters.
<b>Applicability</b>	Both the internal account and the coding scheme are mandatory.
<b>Dependence requirements</b>	None.

## 3.6.5.2 INTERNALACCOUNTTSO - CODINGScheme

ACTION	DESCRIPTION
<b>Definition of element</b>	Identification of the System Operator that created the internal account identification.
<b>Description</b>	The System Operator that created the internal account identification. The codification scheme used for the coded identification is indicated by the coding scheme attribute and shall indicate the code "305" for an EIC party code.
<b>Size</b>	The maximum length of the identification is 16 alphanumeric characters. The maximum length of the coding scheme code is 3 alphanumeric characters.
<b>Applicability</b>	Both the identification and the coding scheme are dependent.
<b>Dependence requirements</b>	The InternalAccountTso is required if the identification of the System Operator that created the account is ambiguous.

## 3.6.5.3 EXTERNALACCOUNT - CODINGScheme

ACTION	DESCRIPTION
<b>Definition of element</b>	The identification of the external account that is defined by the adjacent System Operator.
<b>Description</b>	The identification of the external account that is defined by the adjacent System Operator that has been used in the nomination. The codification scheme used for the coded identification is indicated by the coding scheme attribute and shall indicate the code "ZSO" for a System Operator code or "305" for an EIC area code.
<b>Size</b>	The maximum length of the external account is 35 alphanumeric characters. The maximum length of the coding scheme is 3 alphanumeric characters.
<b>Applicability</b>	Both the external account and the coding scheme are mandatory.
<b>Dependence requirements</b>	None.

## 3.6.5.4 EXTERNALACCOUNTTSO - CODINGScheme

ACTION	DESCRIPTION
<b>Definition of element</b>	Identification of the System Operator that created the external account identification.
<b>Description</b>	The System Operator that created the external account identification. The codification scheme used for the coded identification is indicated by the coding scheme attribute and shall indicate the code "305" for an EIC party code.
<b>Size</b>	The maximum length of the identification is 16 alphanumeric characters. The maximum length of the coding scheme code is 3 alphanumeric characters.
<b>Applicability</b>	Both the identification and the coding scheme are dependent.
<b>Dependence requirements</b>	The ExternalAccountTso is required if the identification of the System Operator that created the account is ambiguous.



**3.6.6 RULES GOVERNING THE INFORMATION ORIGIN TIMESERIES CLASS**

There must always be an Information Origin TimeSeries class.

**3.6.6.1 TYPE**

ACTION	DESCRIPTION
<b>Definition of element</b>	The identification of the origin of the information in the time series
<b>Description</b>	The identification of the source of the information that is provided in the Period class and its dependents The following Types are permitted: 12G = Accepted by System Operator 14G = Processed by System Operator 16G = Confirmed Note: 14G and 16G are mandatory in the Callup response. 12G is mandatory only when initial nomination values are required to satisfy specific market rules. (Reference Edig@s BusinessType code list).
<b>Size</b>	The maximum length of the Account Role is 3 alphanumeric characters.
<b>Applicability</b>	This information is mandatory.
<b>Dependence requirements</b>	None.

**3.6.7 RULES GOVERNING THE PERIOD CLASS**

There must always be a Period class. A time interval instance value (e.g. 2012-05-23T01:00Z/2012-05-23T02:00Z) may only appear once within an Information Origin class.

The Period shall cover one or multiple intervals of a whole gas day.

**3.6.7.1 TIMEINTERVAL**

ACTION	DESCRIPTION
<b>Definition of element</b>	The start and end date and time of the time interval of the period in question.
<b>Description</b>	This information provides the start and end date and time of the period being reported.
<b>Size</b>	Refer to section 1.2 of the Edig@s General Guidelines for information on the attribute structure.
<b>Applicability</b>	This information is mandatory.
<b>Dependence requirements</b>	None.

**3.6.7.2 DIRECTION.CODE**

ACTION	DESCRIPTION
<b>Definition of element</b>	Identifies how the energy flow is to be seen from the perspective of the Transmitting System Operator's area.
<b>Description</b>	This identifies the direction of the energy flow. Permitted codes are: Z02 = Input Z03 = Output (Reference Edig@s GasDirectionType code list).
<b>Size</b>	The maximum length of this information is 3 alphanumeric characters.
<b>Applicability</b>	This information is mandatory.
<b>Dependence requirements</b>	None.

## 431 3.6.7.3 TOTAL\_QUANTITY.AMOUNT

ACTION	DESCRIPTION
<b>Definition of element</b>	The total quantity for the connection point within the time interval in question.
<b>Description</b>	This information defines the total quantity for the connection point within the time interval period. A decimal point value may be used to express values that are inferior to the defined unit of measurement. The decimal mark that separates the digits forming the integral part of a number from those forming the fractional part (ISO 6093) shall always be a period ("."). All quantities are non-signed values.
<b>Size</b>	The maximum length of this information is 17 numeric characters (decimal mark included). All leading zeros are to be suppressed. The number of decimal places identifying the fractional part of the quantity depends on local market rules.
<b>Applicability</b>	This information is mandatory.
<b>Dependence requirements</b>	None.

## 432 3.6.7.4 FIRM\_QUANTITY.AMOUNT

ACTION	DESCRIPTION
<b>Definition of element</b>	The firm processed quantity for the connection point within the time interval in question.
<b>Description</b>	This information defines the firm processed quantity for the connection point within the time interval period. This represents a part of the total quantity. A decimal point value may be used to express values that are inferior to the defined unit of measurement. The decimal mark that separates the digits forming the integral part of a number from those forming the fractional part (ISO 6093) shall always be a period ("."). All quantities are non-signed values.
<b>Size</b>	The maximum length of this information is 17 numeric characters (decimal mark included). All leading zeros are to be suppressed. The number of decimal places identifying the fractional part of the quantity depends on local market rules.
<b>Applicability</b>	This information is dependent.
<b>Dependence requirements</b>	This attribute may only be used in the case of an information origin "14G" and where specific capacity allocation rules require this information.

**3.6.8 RULES GOVERNING THE STATUS CLASS**

The Status class may be used to provide additional information provided by the System Operator.

**3.6.8.1 CODE**

ACTION	DESCRIPTION
<b>Definition of element</b>	The status of given quantity within a time interval.
<b>Description</b>	<p>This information provides status of the quantity for the being reported.</p> <p>Currently only one of the following status values are permitted:</p> <p>06G = Mismatch. A mismatch is the result of the application of a matching rule to unequal nominated quantities.</p> <p>07G = Interrupted. The value is decreased down to the interruptible capacity limit.</p> <p>08G = Interrupted firm. The value is decreased down to the firm interruptible capacity in the case where no interruptible capacity remains.</p> <p>09G = Quality deficient. The value is decreased due to the deficient quality of gas</p> <p>10G = Reduced capacity. Confirmed capacity being less than the default capacity due to constraints or maintenance</p> <p>35G = Counter party prevailed</p> <p>36G = No match counter party prevailed</p> <p>56G = Increased nominated capacity (Reference Edig@s StatusType code list).</p>
<b>Size</b>	The maximum length of this information is 3 alphanumeric characters.
<b>Applicability</b>	This information is mandatory.
<b>Dependence requirements</b>	None.

**3.6.8.2 REASON.TEXT**

ACTION	DESCRIPTION
<b>Definition of element</b>	Textual explanation of the quantity status code.
<b>Description</b>	If the code does not provide all the information to clearly identify the justification of an eventual amendment or a rejection then the textual information may be provided.
<b>Size</b>	The maximum length of this information is 512 alphanumeric characters.
<b>Applicability</b>	This information is dependent.
<b>Dependence requirements</b>	Used only if the quantity status code is insufficient to identify an amendment or an error.

### 3.7 CONTEXTUAL MODEL FOR NOMINATION RESPONSE DOCUMENT (NOMRES)

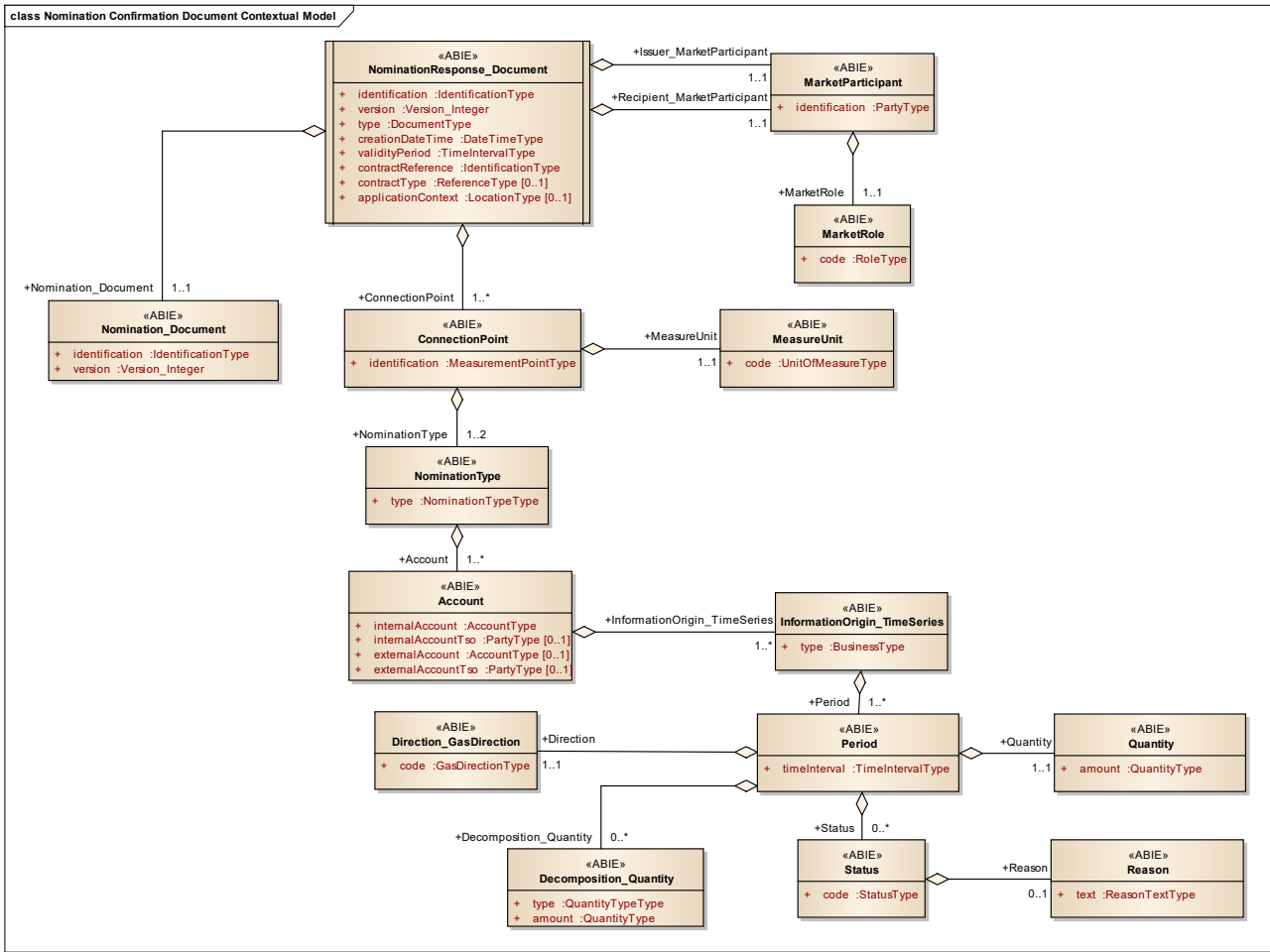
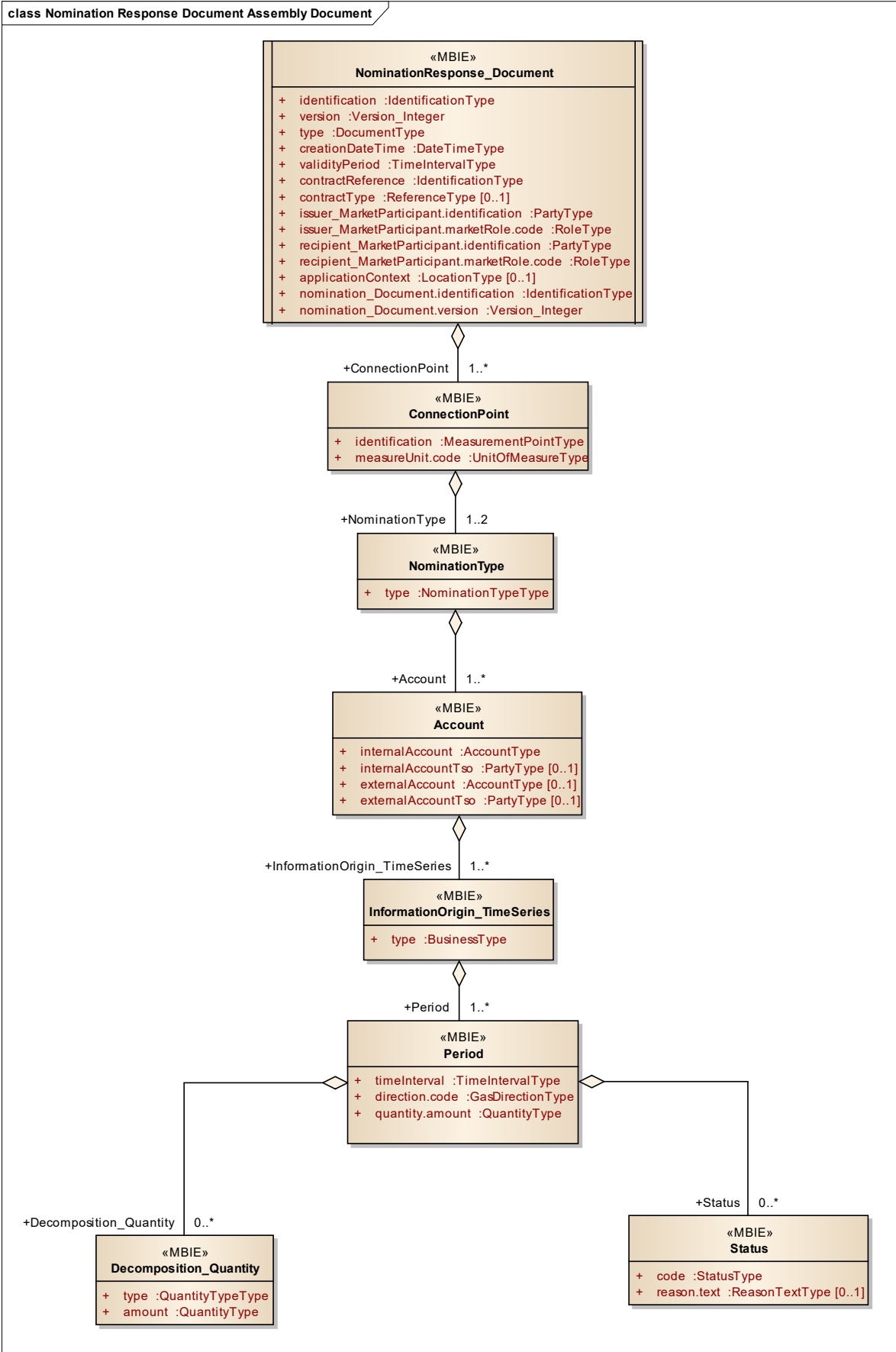


FIGURE 15: NOMINATION RESPONSE DOCUMENT CONTEXTUAL MODEL

442

3.7.1 INFORMATION MODEL STRUCTURE



443

444

FIGURE 16: NOMINATION RESPONSE DOCUMENT ASSEMBLY MODEL

### 3.7.2 INFORMATION MODEL DESCRIPTION

A Nomination Response Document is used by a System Operator to send a nomination response to a Shipper in reply to a Shipper nomination.

### 3.7.3 RULES GOVERNING THE NOMINATION RESPONSE DOCUMENT CLASS

A document is uniquely identified by:

- The identification of the document
- The issuer identification
- The identification of the version.

#### 3.7.3.1 IDENTIFICATION

ACTION	DESCRIPTION
<b>Definition of element</b>	Identification of the document describing the Nomination Response Document.
<b>Description</b>	A Nomination Response Document must have a unique identification assigned by the issuer of the document to be sent to a recipient for a given validity period. The issuer must guarantee that this identification is unique over time.
<b>Size</b>	The identification of a Nomination Response Document may not exceed 35 alphanumeric characters.
<b>Applicability</b>	This information is mandatory.
<b>Dependence requirements</b>	None.

#### 3.7.3.2 VERSION

ACTION	DESCRIPTION
<b>Definition of element</b>	Version of the document being sent.
<b>Description</b>	The document version is used to identify a given version of a Nomination Response Document. The first version number for a given document identification shall normally be 1. The document version number must be incremented for each retransmission of a document that contains changes to the previous version. The receiving system shall only accept a document with a version number which is greater than the previous version number of the same document.
<b>Size</b>	A version number may not exceed 3 numeric characters.
<b>Applicability</b>	This information is mandatory.
<b>Dependence requirements</b>	None.

#### 3.7.3.3 TYPE

ACTION	DESCRIPTION
<b>Definition of element</b>	The type of the document being sent.
<b>Description</b>	This identifies the type of Nomination Response Document that is being sent. The following types of Nomination Response Document are currently permitted: 07G = Processed notice: Message sent by a System Operator to communicate to the Shipper his processed nomination as well as the one of the counter Shipper 08G = Confirmation notice: Message sent by a System Operator to confirm the quantity that may be transmitted and to inform about the quantity processed by the counter System Operator AND = Interruption notice. A notice informing a Shipper of a possible interruption to the quantities nominated. (Reference Edig@s DocumentType code list).
<b>Size</b>	A type may not exceed 3 alphanumeric characters.
<b>Applicability</b>	This information is mandatory.
<b>Dependence requirements</b>	None.

## 3.7.3.4 CREATIONDATETIME

ACTION	DESCRIPTION
<b>Definition of element</b>	Date and time of the creation of the document.
<b>Description</b>	The date and time that the document was prepared for transmission by the application of the issuer.
<b>Size</b>	Refer to section 1.2 of the Edig@s General Guidelines for information on the attribute structure.
<b>Applicability</b>	This information is mandatory.
<b>Dependence requirements</b>	None.

## 3.7.3.5 VALIDITYPERIOD

ACTION	DESCRIPTION
<b>Definition of element</b>	The start and end date and time of the period of validity covered in the document.
<b>Description</b>	This information provides the start and end date and time of the period of validity of the document.
<b>Size</b>	Refer to section 1.2 of the Edig@s General Guidelines for information on the attribute structure.
<b>Applicability</b>	This information is mandatory.
<b>Dependence requirements</b>	None.

## 3.7.3.6 CONTRACTREFERENCE

ACTION	DESCRIPTION
<b>Definition of element</b>	Reference to a contract covering the Nomination Response Document.
<b>Description</b>	The contract reference provides the identification of the contract relevant to the whole document.
<b>Size</b>	The contract reference may not exceed 35 alphanumeric characters.
<b>Applicability</b>	This information is mandatory.
<b>Dependence requirements</b>	None

## 3.7.3.7 CONTRACTTYPE

ACTION	DESCRIPTION
<b>Definition of element</b>	Identification of the type of contract covering the document.
<b>Description</b>	The contract type identifies the nature of the contract defined in the document. Refer to the Edigas ReferenceType code list for the list of valid codes.
<b>Size</b>	The maximum length of the contract type is 3 alphanumeric characters.
<b>Applicability</b>	This information is dependent.
<b>Dependence requirements</b>	This information is used depending on local market rules.

## 3.7.3.8 ISSUER\_MARKETPARTICIPANT.IDENTIFICATION – CODINGScheme

ACTION	DESCRIPTION
<b>Definition of element</b>	Identification of the party who has issued the document.
<b>Description</b>	The issuer of the document is identified by a unique coded identification. This code identifies the party that is the "owner" of the information being transmitted in the document. The codification scheme used for the coded identification is indicated by the coding scheme attribute and shall indicate the code "305" for an EIC party code.
<b>Size</b>	The maximum length of an issuer's identification is 16 alphanumeric characters. The maximum length of the coding scheme code is 3 alphanumeric characters.
<b>Applicability</b>	Both the identification and the coding scheme are mandatory.
<b>Dependence requirements</b>	None.

## 3.7.3.9 ISSUER\_MARKETPARTICIPANT.MARKETROLE.CODE

ACTION	DESCRIPTION
<b>Definition of element</b>	Identification of the role that the party who has issued the document is playing.
<b>Description</b>	The role being played by the issuer of the document for this transmission. The following role is permitted for this document: ZSO = System Operator (Reference Edig@s RoleType code list).
<b>Size</b>	The maximum length of this information is 3 alphanumeric characters.
<b>Applicability</b>	This information is mandatory.
<b>Dependence requirements</b>	None.

## 3.7.3.10 RECIPIENT\_MARKETPARTICIPANT.IDENTIFICATION – CODINGScheme

ACTION	DESCRIPTION
<b>Definition of element</b>	Identification of the party who is receiving the document.
<b>Description</b>	The recipient of the document is identified by a unique coded identification. The codification scheme used for the coded identification is indicated by the coding scheme attribute and shall indicate the code "305" for an EIC party code.
<b>Size</b>	The maximum length of a recipient's identification is 16 alphanumeric characters. The maximum length of the coding scheme code is 3 alphanumeric characters.
<b>Applicability</b>	Both the identification and the coding scheme are mandatory.
<b>Dependence requirements</b>	None.

## 3.7.3.11 RECIPIENT\_MARKETPARTICIPANT.MARKETROLE.CODE

ACTION	DESCRIPTION
<b>Definition of element</b>	Identification of the role that the party who receives the document is playing.
<b>Description</b>	The role being played by the recipient of the document for this transmission. The following roles are permitted for this document: ZSH = Shipper ZSY = Balance Area Responsible (e.g. handles Shippers with no formal contract). (Reference Edig@s RoleType code list).
<b>Size</b>	The maximum length of this information is 3 alphanumeric characters.
<b>Applicability</b>	This information is mandatory.
<b>Dependence requirements</b>	None.

## 3.7.3.12 APPLICATIONCONTEXT – CODINGScheme

ACTION	DESCRIPTION
<b>Definition of element</b>	The identification of a particular context that is significant to the recipient.
<b>Description</b>	The Application Context is used to identify a particular context (location, application, etc.) that is relevant to the recipient of the document. The codification scheme used for the coded identification is indicated by the coding scheme attribute and shall indicate the code "305" for an EIC Location code.
<b>Size</b>	The maximum length of an application context's identification is 16 alphanumeric characters. The maximum length of the coding scheme code is 3 alphanumeric characters.
<b>Applicability</b>	This information is dependent.
<b>Dependence requirements</b>	The information is only provided when there is bi lateral agreement between the parties.



## 3.7.3.13 NOMINATION\_DOCUMENT.IDENTIFICATION

ACTION	DESCRIPTION
<b>Definition of element</b>	The identification of the Nomination Document concerned by the Nomination Response Document.
<b>Description</b>	A Nomination Document must have been previously sent by the recipient of the Nomination Response Document. If no initialising electronic XML document has been received prior to the emission of the current document or if it is based on the contents of a paper document then this attribute shall contain the word "DEFAULT".
<b>Size</b>	The identification may not exceed 35 alphanumeric characters.
<b>Applicability</b>	This information is mandatory.
<b>Dependence requirements</b>	None.

## 3.7.3.14 NOMINATION\_DOCUMENT.VERSION

ACTION	DESCRIPTION
<b>Definition of element</b>	Version of the Nomination Document concerned by the Nomination Response Document.
<b>Description</b>	The Nomination Version must correspond to the version of the Nomination Document previously sent by the recipient. If no electronic XML document is used then the Nomination_Document.version shall contain the number "1" and successive numbers of necessary.
<b>Size</b>	A version number may not exceed 3 numeric characters.
<b>Applicability</b>	This information is mandatory.
<b>Dependence requirements</b>	None.

## 3.7.4 RULES GOVERNING THE CONNECTION POINT CLASS

There may be one to many connection points in a Nomination Response Document corresponding to the connection points previously defined in a Nomination Document.

## 3.7.4.1 IDENTIFICATION – CODINGScheme

ACTION	DESCRIPTION
<b>Definition of element</b>	The identification of a connection point.
<b>Description</b>	The identification of a connection point within a System Operator's system. The codification scheme used for the coded identification is indicated by the coding scheme attribute and shall indicate the code "305" for an EIC measurement point code or the code "ZSO" for a System Operator code.
<b>Size</b>	The maximum length of the connection point identification is 35 alphanumeric characters. The maximum length of the coding scheme is 3 alphanumeric characters.
<b>Applicability</b>	Both the connection point identification and the coding scheme are mandatory.
<b>Dependence requirements</b>	None.

#### 3.7.4.2 MEASUREUNIT.CODE

ACTION	DESCRIPTION
<b>Definition of element</b>	The unit of measure which is applied to all the quantities in the time series of the document.
<b>Description</b>	The unit of measurement used for all the quantities expressed within a time series. The following are the codes recommended for use: KW1 = Kilowatt-hour per hour (kWh/h) KW2 = Kilowatt-hour per day (kWh/d) A15 = Kilogram per hour (Kg/h) (Reference Edig@s UnitOfMeasureType code list).
<b>Size</b>	The maximum length of this information is 3 alphanumeric characters.
<b>Applicability</b>	This information is mandatory.
<b>Dependence requirements</b>	None.

#### 3.7.5 RULES GOVERNING THE NOMINATIONTYPE CLASS

The Nomination Type class is used to identify if the time series is being provided as a single sided nomination or as a double sided nomination.

##### 3.7.5.1 TYPE

ACTION	DESCRIPTION
<b>Definition of element</b>	The identification of whether the underlying information refers to a single sided nomination or a double sided nomination.
<b>Description</b>	The type indicating a single sided or a double sided nomination. A01 = Single sided A02 = Double sided (Reference Edig@s NominationType code list)
<b>Size</b>	The maximum length of this information is 3 alphanumeric characters.
<b>Applicability</b>	This information is mandatory.
<b>Dependence requirements</b>	None.

#### 3.7.6 RULES GOVERNING THE ACCOUNT CLASS

The Account class is used to identify a Shipper pair. In the case of End User schedules the external account attribute is not used.

##### 3.7.6.1 INTERNALACCOUNT – CODINGScheme

ACTION	DESCRIPTION
<b>Definition of element</b>	The identification of the internal account that is defined by the responding System Operator.
<b>Description</b>	The identification of the internal account within a System Operator's system for which the document is referencing. The codification scheme used for the coded identification is indicated by the coding scheme attribute and shall indicate the code "ZSO" for a System Operator code or "305" for an EIC area code.
<b>Size</b>	The maximum length of the internal account is 35 alphanumeric characters. The maximum length of the coding scheme is 3 alphanumeric characters.
<b>Applicability</b>	Both the internal account and the coding scheme are mandatory.
<b>Dependence requirements</b>	None.

## 480 3.7.6.2 INTERNALACCOUNTTso - CODINGScheme

ACTION	DESCRIPTION
<b>Definition of element</b>	Identification of the System Operator that created the internal account identification.
<b>Description</b>	The System Operator that created the internal account identification. The codification scheme used for the coded identification is indicated by the coding scheme attribute and shall indicate the code "305" for an EIC party code.
<b>Size</b>	The maximum length of the identification is 16 alphanumeric characters. The maximum length of the coding scheme code is 3 alphanumeric characters.
<b>Applicability</b>	Both the identification and the coding scheme are dependent.
<b>Dependence requirements</b>	The InternalAccountTso is required if the identification of the System Operator that created the account is ambiguous.

## 481 3.7.6.3 EXTERNALACCOUNT – CODINGScheme

ACTION	DESCRIPTION
<b>Definition of element</b>	The identification of an account that is defined by the adjacent System Operator.
<b>Description</b>	The identification of an account that is defined by the adjacent System Operator. The codification scheme used for the coded identification is indicated by the coding scheme attribute and shall indicate the code "ZSO" for a System Operator code or "305" for an EIC area code.
<b>Size</b>	The maximum length of the external account is 35 alphanumeric characters. The maximum length of the coding scheme is 3 alphanumeric characters.
<b>Applicability</b>	This information is dependent.
<b>Dependence requirements</b>	The external account is not always used in the case of End User schedules.

## 482 3.7.6.4 EXTERNALACCOUNTTso - CODINGScheme

ACTION	DESCRIPTION
<b>Definition of element</b>	Identification of the System Operator that created the external account identification.
<b>Description</b>	The System Operator that created the external account identification. The codification scheme used for the coded identification is indicated by the coding scheme attribute and shall indicate the code "305" for an EIC party code.
<b>Size</b>	The maximum length of the identification is 16 alphanumeric characters. The maximum length of the coding scheme code is 3 alphanumeric characters.
<b>Applicability</b>	Both the identification and the coding scheme are dependent.
<b>Dependence requirements</b>	The ExternalAccountTso is required if the identification of the System Operator that created the account is ambiguous.

**3.7.7 RULES GOVERNING THE INFORMATION ORIGIN TIMESERIES CLASS**

There must always be an Information Origin timeseries class.

**3.7.7.1 TYPE**

ACTION	DESCRIPTION
<b>Definition of element</b>	The identification of the origin of the information in the time series
<b>Description</b>	<p>The identification of the source of the information that is provided in the Period class and its dependents</p> <p>The following Types are permitted:</p> <p>14G = Processed by System Operator</p> <p>15G = Processed by adjacent System Operator</p> <p>16G = Confirmed</p> <p>18G = Nominated by counter party</p> <p><b>Note:</b></p> <p><b>In the System Operator to System Operator context:</b></p> <p>14G is mandatory in Processed Notice</p> <p>14G, 15G and 16G are mandatory in Confirmation Notice.</p> <p>18G is optional in the Confirmation notice.</p> <p>14G is mandatory in the Interruption notice.</p> <p><b>In the Virtual Connection Point nomination within a System Operator area context:</b></p> <p>16G and 18G are mandatory in Confirmation Notice (18G represents the virtual connection point nomination)</p> <p><b>In the nomination of end user schedules context:</b></p> <p>16G is mandatory in Confirmation Notice (15G is not allowed)</p> <p>(Reference Edig@s BusinessType code list).</p>
<b>Size</b>	The maximum length of the type is 3 alphanumeric characters.
<b>Applicability</b>	This information is mandatory.
<b>Dependence requirements</b>	None.

**3.7.8 RULES GOVERNING THE PERIOD CLASS**

There must always be a Period class. A time interval instance value (e.g. 2012-05-23T01:00Z/2012-05-23T02:00Z) may only appear once within an Account class.

The Period shall cover one or multiple intervals of a whole gas day.

**3.7.8.1 TIMEINTERVAL**

ACTION	DESCRIPTION
<b>Definition of element</b>	The start and end date and time of the time interval of the period in question.
<b>Description</b>	This information provides the start and end date and time of the period being reported.
<b>Size</b>	Refer to section 1.2 of the Edig@s General Guidelines for information on the attribute structure.
<b>Applicability</b>	This information is mandatory.
<b>Dependence requirements</b>	None.

491 **3.7.8.2 DIRECTION.CODE**

ACTION	DESCRIPTION
<b>Definition of element</b>	Identifies how the energy flow is to be seen from the perspective of the System Operator's area.
<b>Description</b>	This identifies the direction of the energy flow. Permitted codes are: Z02 = Input Z03 = Output (Reference Edig@s GasDirectionType code list).
<b>Size</b>	The maximum length of this information is 3 alphanumeric characters.
<b>Applicability</b>	This information is mandatory.
<b>Dependence requirements</b>	None.

492 **3.7.8.3 QUANTITY.AMOUNT**

ACTION	DESCRIPTION
<b>Definition of element</b>	The quantity for the connection point within the time interval in question.
<b>Description</b>	This information defines the quantity for the connection point within the time interval period. A decimal point value may be used to express values that are inferior to the defined unit of measurement. The decimal mark that separates the digits forming the integral part of a number from those forming the fractional part (ISO 6093) shall always be a period ("."). All quantities are non-signed values.
<b>Size</b>	The maximum length of this information is 17 numeric characters (decimal mark included). All leading zeros are to be suppressed. The number of decimal places identifying the fractional part of the quantity depends on local market rules.
<b>Applicability</b>	This information is mandatory.
<b>Dependence requirements</b>	None.

**3.7.9 RULES GOVERNING THE STATUS CLASS**

The presence of a Status class is dependent on the information requirements which are determined by local market rules.

**3.7.9.1 CODE**

ACTION	DESCRIPTION
<b>Definition of element</b>	The status of given quantity within a time interval.
<b>Description</b>	<p>This information provides the status of the quantity for the time interval being reported.</p> <p>Only one of the following status values are permitted:</p> <p>06G = Mismatch.  07G = Interrupted.  08G = Interrupted firm.  09G = Quality deficient.  10G = Reduced capacity.  11G = Below 100%.  12G = Settled.  13G = Unchanged settled.  14G = No counter nomination.  35G = Counter Party Prevailed.  36G = No Match counter party prevailed.  37G = Reduced Nominated Quantity.  67G = Market imbalance constraint curtailment  72G = Reduced to the level of booked capacity.  73G = Overnomination not possible.  74G = Interruptible conditionally firm.  (Reference Edig@s StatusType code list).</p>
<b>Size</b>	The maximum length of this information is 3 alphanumeric characters.
<b>Applicability</b>	This information is mandatory.
<b>Dependence requirements</b>	None

**3.7.9.2 REASON.TEXT**

ACTION	DESCRIPTION
<b>Definition of element</b>	Textual explanation of the quantity status code.
<b>Description</b>	If the code does not provide all the information to clearly identify the justification of an eventual amendment or a rejection then the textual information may be provided.
<b>Size</b>	The maximum length of this information is 512 alphanumeric characters.
<b>Applicability</b>	This information is dependent.
<b>Dependence requirements</b>	Used only if the quantity status code is insufficient to identify an amendment or an error.

**3.7.10 RULES GOVERNING THE DECOMPOSITION QUANTITY CLASS**

The presence of a Decomposition Quantity class is dependent on the information requirements that are determined by local market rules and restricted to LNG Connection Points.

A Decomposition Quantity class is used whenever the quantities nominated have to be distributed by type of contract to which they are being nominated.

The sum of the quantities in the Decomposition Quantity class must correspond to the total quantity that is being nominated in the Period class.

The unit of measure must be identical to the unit of measure identified in the Period class.

The direction must be identical to the direction identified in the Period class.

**3.7.10.1 TYPE**

ACTION	DESCRIPTION
<b>Definition of element</b>	The type of the contract that the quantity is being nominated from.
<b>Description</b>	This information provides the type of the contract that the quantity is being extracted from. The current types permitted for this code are: ZXD = Firm ZXE = Makeup ZXF = Interruptible ZXG = Conditional (Reference Edig@s QunatityTypeType code list).
<b>Size</b>	The maximum length of this information is 3 alphanumeric characters.
<b>Applicability</b>	This information is mandatory.
<b>Dependence requirements</b>	None.

**3.7.10.2 AMOUNT**

ACTION	DESCRIPTION
<b>Definition of element</b>	The quantity that is being used for the type of contract in question.
<b>Description</b>	This information provides the quantity that is being extracted from a given type of contract. A decimal point value may be used to express values that are inferior to the defined unit of measurement. The decimal mark that separates the digits forming the integral part of a number from those forming the fractional part (ISO 6093) shall always be a period ("."). All quantities are non-signed values.
<b>Size</b>	The maximum length of this information is 17 numeric characters (decimal mark included). All leading zeros are to be suppressed. The number of decimal places identifying the fractional part of the quantity depends on local market rules.
<b>Applicability</b>	This information is mandatory.
<b>Dependence requirements</b>	None.

4 DOCUMENT CHANGE LOG

Package	Version	Date	Description
5.0	1	2013-07-03	Initial release
5.1	2	2013-12-19	Modified to ensure the alignment of all names in the models. Addition of an Account TSO to identify the TSO responsible for the creation of the account identification.
5.1	3	2015-08-18	Addition of an nomination authorisation document. Correction of the delivery order multiplicity for a connection point. Addition of a timestamp for single sided nominations in the delivery order document. Addition of 67G in the nomination response status attribute. Change line 137 the word "may" with "shall". Figure 5 correct article reference in note from 20 to 17 Figure 6 correct choice "processed information correct?" "Yes", "no" decisions Paragraph 3.4.5 change word "it" by "if"
5.1	4	2020-06-01	Added 3 new codes 72G, 73G, 74G to StatusTypeList for NOMRES in section 3.7.9.1.
5.1	5	2025-01-15	Added new unit A15 (Kg/h) to UnitOfMeasureType for NOMINT, NOMRES, DELORD and DELRES.