

# Edig@s Datatype Documentation for Electronic Documents



The European message format for the gas market

*Version 6.1*

*Document Version: 3*

## Table of Contents

23		
24		
25	<b>1 Datatype Model Detail .....</b>	<b>5</b>
26	<b>2 Edig@s Datatypes .....</b>	<b>6</b>
27	<b>3 Datatype list .....</b>	<b>11</b>
28	3.1 Date Stereotype «Primitive» .....	11
29	3.2 Time Stereotype «Primitive».....	11
30	3.3 DateTime Stereotype «Primitive» .....	11
31	3.4 Decimal Stereotype «Primitive» .....	11
32	3.5 Integer Stereotype «Primitive» .....	11
33	3.6 String Stereotype «Primitive» .....	11
34	3.7 AccountCodeType Stereotype «CIMDatatype» .....	11
35	3.7.1 <u>List of Attributes</u> .....	11
36	3.8 AccountDirectionCodeType Stereotype «CIMDatatype» .....	11
37	3.8.1 <u>List of Attributes</u> .....	11
38	3.9 AccountType Stereotype «CIMDatatype» .....	11
39	3.9.1 <u>List of Attributes</u> .....	11
40	3.10 AllocationSchemeCodeType Stereotype «CIMDatatype» .....	11
41	3.10.1 <u>List of Attributes</u> .....	11
42	3.11 Amount_Decimal Stereotype «CIMDatatype» .....	12
43	3.11.1 <u>List of Attributes</u> .....	12
44	3.12 AreaType Stereotype «CIMDatatype» .....	12
45	3.12.1 <u>List of Attributes</u> .....	12
46	3.13 AssetType Stereotype «CIMDatatype» .....	12
47	3.13.1 <u>List of Attributes</u> .....	12
48	3.14 AvailabilityCodeType Stereotype «CIMDatatype» .....	12
49	3.14.1 <u>List of Attributes</u> .....	12
50	3.15 BookablePointType Stereotype «CIMDatatype» .....	12
51	3.15.1 <u>List of Attributes</u> .....	12
52	3.16 BusinessCodeType Stereotype «CIMDatatype» .....	13
53	3.16.1 <u>List of Attributes</u> .....	13
54	3.17 CapacityCodeType Stereotype «CIMDatatype» .....	13
55	3.17.1 <u>List of Attributes</u> .....	13
56	3.18 ChemicalCompoundCodeType Stereotype «CIMDatatype» .....	13
57	3.18.1 <u>List of Attributes</u> .....	13
58	3.19 CurrencyCodeType Stereotype «CIMDatatype».....	13
59	3.19.1 <u>List of Attributes</u> .....	13
60	3.20 DateTimeType Stereotype «CIMDatatype» .....	13
61	3.20.1 <u>List of Attributes</u> .....	13
62	3.21 DocumentCodeType Stereotype «CIMDatatype» .....	13
63	3.21.1 <u>List of Attributes</u> .....	13
64	3.22 EnergyProductCodeType Stereotype «CIMDatatype».....	13
65	3.22.1 <u>List of Attributes</u> .....	13

66	3.23	FormulaType Stereotype «CIMDatatype» .....	14
67	3.23.1	<u>List of Attributes</u> .....	14
68	3.24	GasDirectionCodeType Stereotype «CIMDatatype» .....	14
69	3.24.1	<u>List of Attributes</u> .....	14
70	3.25	IdentificationType Stereotype «CIMDatatype» .....	14
71	3.25.1	<u>List of Attributes</u> .....	14
72	3.26	IndicatorCodeType Stereotype «CIMDatatype» .....	14
73	3.26.1	<u>List of Attributes</u> .....	14
74	3.27	LocationType Stereotype «CIMDatatype» .....	14
75	3.27.1	<u>List of Attributes</u> .....	14
76	3.28	LongIdentificationType Stereotype «CIMDatatype» .....	14
77	3.28.1	<u>List of Attributes</u> .....	14
78	3.29	MeasurementCodeType Stereotype «CIMDatatype» .....	14
79	3.29.1	<u>List of Attributes</u> .....	15
80	3.30	MeasurementPointType Stereotype «CIMDatatype» .....	15
81	3.30.1	<u>List of Attributes</u> .....	15
82	3.31	MeteorologicalPropertyCodeType Stereotype «CIMDatatype» .....	15
83	3.31.1	<u>List of Attributes</u> .....	15
84	3.32	NominationCodeType Stereotype «CIMDatatype» .....	15
85	3.32.1	<u>List of Attributes</u> .....	15
86	3.33	PartyType Stereotype «CIMDatatype» .....	15
87	3.33.1	<u>List of Attributes</u> .....	15
88	3.34	PercentageType Stereotype «CIMDatatype» .....	15
89	3.34.1	<u>List of Attributes</u> .....	15
90	3.35	PeriodSpanCodeType Stereotype «CIMDatatype» .....	16
91	3.35.1	<u>List of Attributes</u> .....	16
92	3.36	PhysicalPropertyCodeType Stereotype «CIMDatatype» .....	16
93	3.36.1	<u>List of Attributes</u> .....	16
94	3.37	PositionType Stereotype «CIMDatatype» .....	16
95	3.37.1	<u>List of Attributes</u> .....	16
96	3.38	PriceCodeType Stereotype «CIMDatatype» .....	16
97	3.38.1	<u>List of Attributes</u> .....	16
98	3.39	ProcedureCodeType Stereotype «CIMDatatype» .....	16
99	3.39.1	<u>List of Attributes</u> .....	16
100	3.40	QuantityCodeType Stereotype «CIMDatatype» .....	16
101	3.40.1	<u>List of Attributes</u> .....	16
102	3.41	QuantityNatureCodeType Stereotype «CIMDatatype» .....	16
103	3.41.1	<u>List of Attributes</u> .....	16
104	3.42	ReasonCodeType Stereotype «CIMDatatype» .....	16
105	3.42.1	<u>List of Attributes</u> .....	16
106	3.43	ReferenceCodeType Stereotype «CIMDatatype» .....	17
107	3.43.1	<u>List of Attributes</u> .....	17
108	3.44	ResourceObjectType Stereotype «CIMDatatype» .....	17
109	3.44.1	<u>List of Attributes</u> .....	17

110	3.45	ResourceTypeCodeType Stereotype «CIMDatatype» .....	17
111	3.45.1	<u>List of Attributes</u> .....	17
112	3.46	RoleCodeType Stereotype «CIMDatatype» .....	17
113	3.46.1	<u>List of Attributes</u> .....	17
114	3.47	StatusCodeType Stereotype «CIMDatatype» .....	17
115	3.47.1	<u>List of Attributes</u> .....	17
116	3.48	TextType Stereotype «CIMDatatype» .....	17
117	3.48.1	<u>List of Attributes</u> .....	17
118	3.49	TimeIntervalType Stereotype «CIMDatatype» .....	17
119	3.49.1	<u>List of Attributes</u> .....	18
120	3.50	TransactionCodeType Stereotype «CIMDatatype» .....	18
121	3.50.1	<u>List of Attributes</u> .....	18
122	3.51	TransferCodeType Stereotype «CIMDatatype» .....	18
123	3.51.1	<u>List of Attributes</u> .....	19
124	3.52	UnitOfMeasureCodeType Stereotype «CIMDatatype» .....	19
125	3.52.1	<u>List of Attributes</u> .....	19
126	3.53	Version_Integer Stereotype «CIMDatatype» .....	19
127	3.53.1	<u>List of Attributes</u> .....	19
128	<b>4</b>	<b>Document Change Log</b> .....	<b>20</b>
129	4.1	Version .....	20
130			

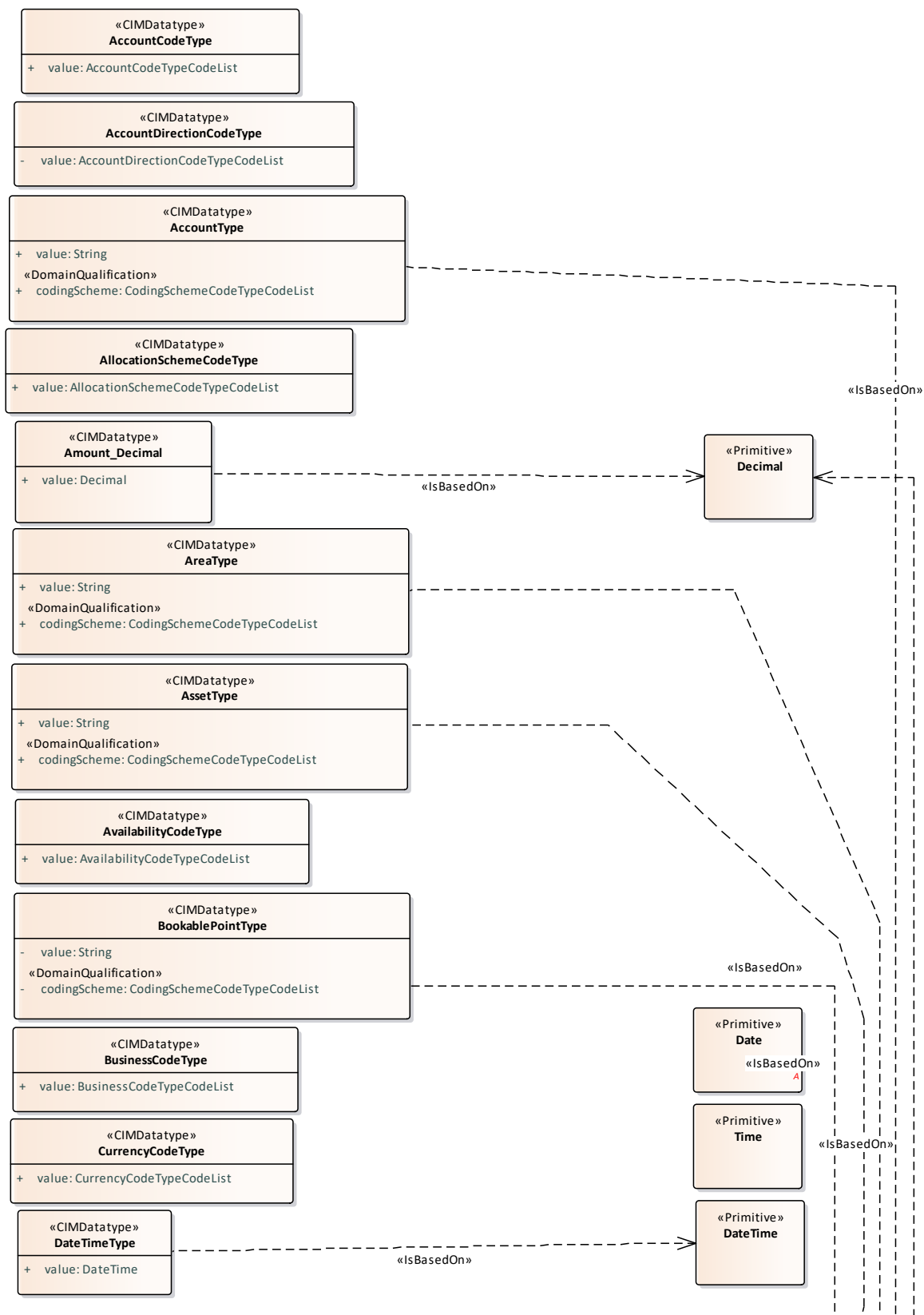
# 1 Datatype Model Detail

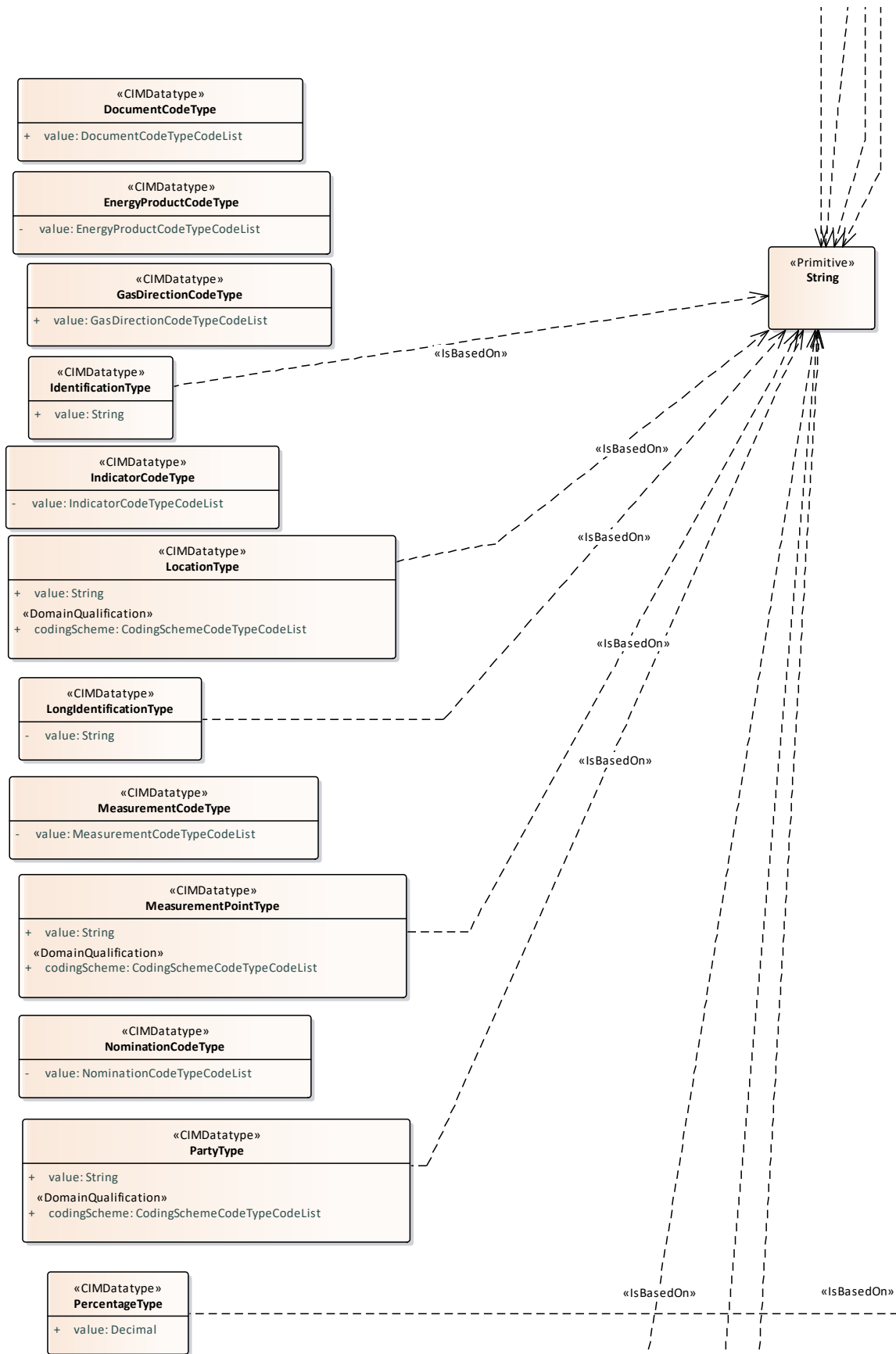
## COPYRIGHT & LIABILITY

The Edig@s Workgroup (EASEE-Gas Message and Workflow Design Working Group) disclaims and excludes, and any user of the Edig@s Workgroup Implementation Guidelines acknowledges and agrees to the Edig@s Workgroup disclaimer of, any and all warranties, conditions or representations, express or implied, oral or written, with respect to the guidelines or any part thereof, including any and all implied warranties or conditions of title, non-infringement, merchantability, or fitness or suitability for any particular purpose (whether or not the Edig@s Workgroup knows, has reason to know, has been advised, or is otherwise in fact aware of any such purpose), whether alleged to arise by law, by reason of custom or usage in the trade, or by course of dealing. Each user of the guidelines also agrees that under no circumstances will the Edig@s Workgroup be liable for any special, incidental, exemplary, punitive or consequential damages arising out of any use of, or errors or omissions in, the guidelines.

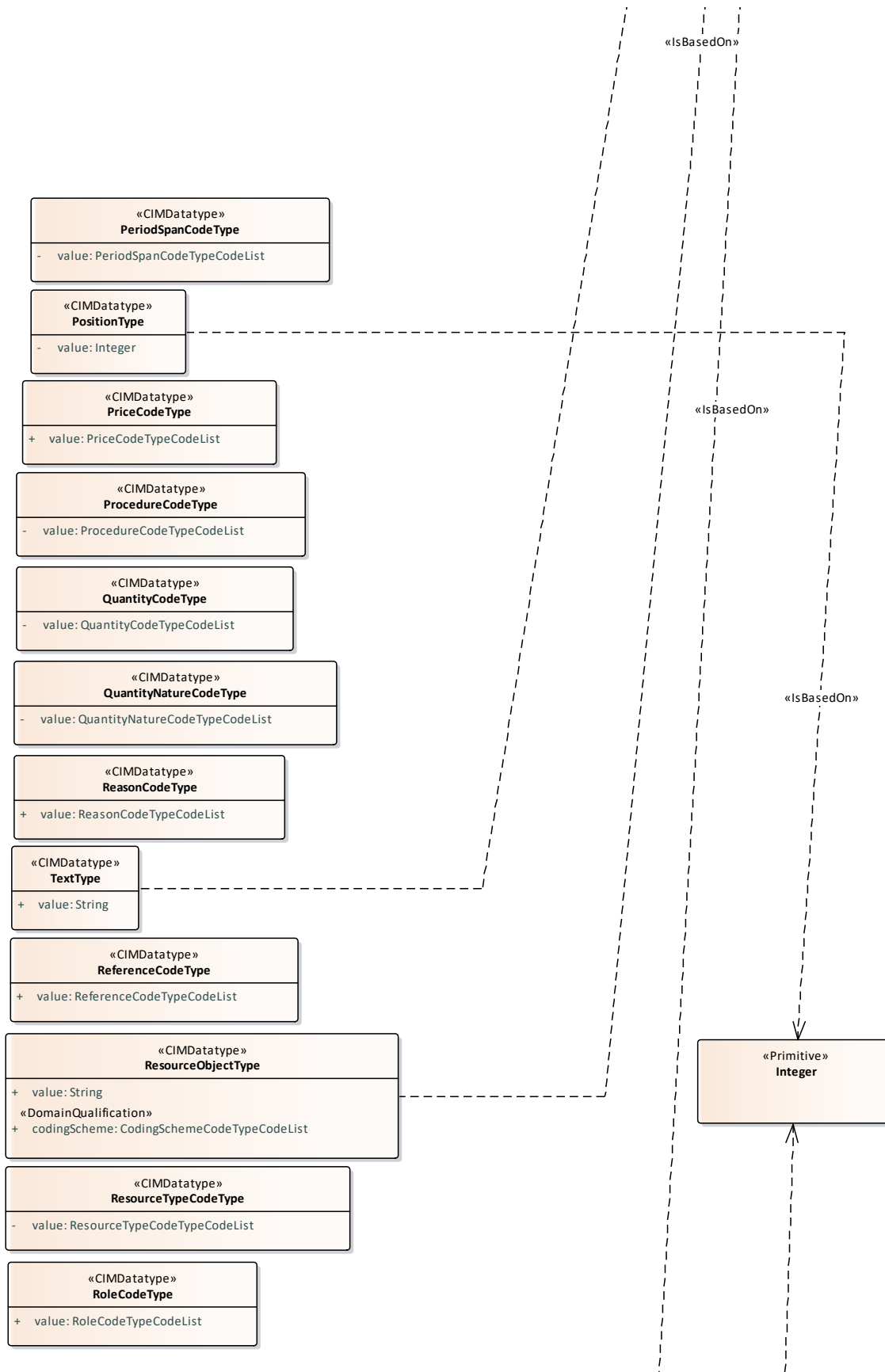
This document provides the complete list of Edig@s Datatypes.

## 181 2 Edig@s Datatypes









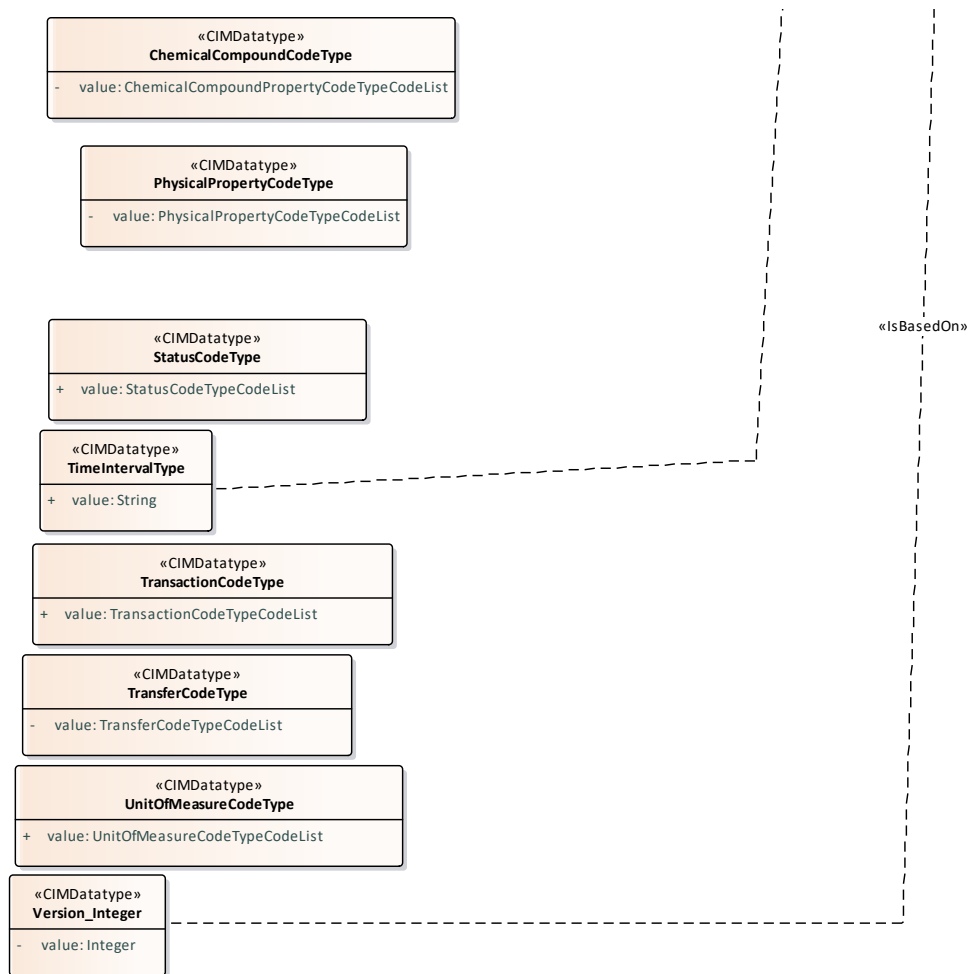


Figure: 1 Datatypes

## 3 Datatype list

### 3.1 Date Stereotype «Primitive»

The identification of a particular calendar day, expressed by some combination of the data elements calendar year, calendar month, calendar week, calendar day or day of the year.

### 3.2 Time Stereotype «Primitive»

The time of the day that respects the ISO 8601 formatting standard.

### 3.3 DateTime Stereotype «Primitive»

The date and time that respects the ISO 8601 formatting standard.

### 3.4 Decimal Stereotype «Primitive»

A number that may have a fraction separated by a decimal point.

### 3.5 Integer Stereotype «Primitive»

A whole value without a decimal fraction.

### 3.6 String Stereotype «Primitive»

A suite of alphanumeric characters.

### 3.7 AccountCodeType Stereotype «CIMDatatype»

A datatype for a codelist identifying the type of an account.

#### 3.7.1 List of Attributes

Name	Datatype	Constraints
value	AccountCodeTypeCodeList	

### 3.8 AccountDirectionCodeType Stereotype «CIMDatatype»

A datatype for a codelist indicating whether an account entry is debit or credit.

#### 3.8.1 List of Attributes

Name	Datatype	Constraints
value	AccountDirectionCodeTypeCodeList	

### 3.9 AccountType Stereotype «CIMDatatype»

A datatype identifying an account and its associated coding scheme.

#### 3.9.1 List of Attributes

Name	Datatype	Constraints
value	String	Type: OCL Facet: maxLength Detail: inv: self->maxLength(35)
codingScheme	CodingSchemeCodeTypeCodeList	

### 3.10 AllocationSchemeCodeType Stereotype «CIMDatatype»

A code list specifying various categories of status of a value.

#### 3.10.1 List of Attributes

Name	Datatype	Constraints
------	----------	-------------

value	AllocationSchemeCodeTypeCodeList	
-------	----------------------------------	--

## 3.11 Amount\_Decimal Stereotype «CIMDatatype»

An amount that may be expressed as a decimal value.

### 3.11.1 List of Attributes

Name	Datatype	Constraints
value	Decimal	Type: OCL Facet: fractionDigits Detail: inv: self->fractionDigits(12) Type: OCL Facet: totalDigits Detail: inv: self->TotalDigits(40)

## 3.12 AreaType Stereotype «CIMDatatype»

An identification of an area within the gas environment and its associated coding scheme..

### 3.12.1 List of Attributes

Name	Datatype	Constraints
value	String	Type: OCL Facet: maxLength Detail: inv: self->maxLength(16)
codingScheme	CodingSchemeCodeTypeCodeList	

## 3.13 AssetType Stereotype «CIMDatatype»

An identification of an asset within the gas environment and its associated coding scheme..

### 3.13.1 List of Attributes

Name	Datatype	Constraints
value	String	Type: OCL Facet: maxLength Detail: inv: self->maxLength(16)
codingScheme	CodingSchemeCodeTypeCodeList	

## 3.14 AvailabilityCodeType Stereotype «CIMDatatype»

A codelist identifying various kinds of gas availability.

### 3.14.1 List of Attributes

Name	Datatype	Constraints
value	AvailabilityCodeTypeCodeList	

## 3.15 BookablePointType Stereotype «CIMDatatype»

A bookable point may be defined as the identification of a (inter)connection point (EIC), the flow direction, the “to TSO” and “from TSO” or in the case of one Transmission System Operator at both sides of the connection point the “to Market area” and the “from Market area”; in case of an unbundled point “to TSO” or “from TSO” is not required.

### 3.15.1 List of Attributes

Name	Datatype	Constraints
value	String	Type: OCL Facet: maxLength Detail: inv: self->maxLength(35)

codingScheme	CodingSchemeCodeTypeCodeList	

## 3.16 BusinessCodeType Stereotype «CIMDatatype»

A codelist identifying the business meaning of an item.

### 3.16.1 List of Attributes

Name	Datatype	Constraints
value	BusinessCodeTypeCodeList	

## 3.17 CapacityCodeType Stereotype «CIMDatatype»

A codelist indicating whether capacity is of a bundled or unbundles nature.

### 3.17.1 List of Attributes

Name	Datatype	Constraints
value	CapacityCodeTypeCodeList	

## 3.18 ChemicalCompoundCodeType Stereotype «CIMDatatype»

A code list identifying chemical compound property types of information.

### 3.18.1 List of Attributes

Name	Datatype	Constraints
value	ChemicalCompoundPropertyCodeTypeCodeList	

## 3.19 CurrencyCodeType Stereotype «CIMDatatype»

A codelist identifying a currency respecting the ISO 4217 standard.

### 3.19.1 List of Attributes

Name	Datatype	Constraints
value	CurrencyCodeTypeCodeList	

## 3.20 DateTimeType Stereotype «CIMDatatype»

A date and time that respects the ISO 8601 formatting standard.

### 3.20.1 List of Attributes

Name	Datatype	Constraints
value	DateTime	

## 3.21 DocumentCodeType Stereotype «CIMDatatype»

A codelist identifying a type of document.

### 3.21.1 List of Attributes

Name	Datatype	Constraints
value	DocumentCodeTypeCodeList	

## 3.22 EnergyProductCodeType Stereotype «CIMDatatype»

A codelist identifying a type of gas.

### 3.22.1 List of Attributes

Name	Datatype	Constraints
value	EnergyProductCodeTypeCodeList	

## 3.23 FormulaType Stereotype «CIMDatatype»

An identification of a formula used to calculate a quantity.

### 3.23.1 List of Attributes

Name	Datatype	Constraints
value	String	

## 3.24 GasDirectionCodeType Stereotype «CIMDatatype»

A codelist identifying a gas direction.

### 3.24.1 List of Attributes

Name	Datatype	Constraints
value	GasDirectionCodeTypeCodeList	

## 3.25 IdentificationType Stereotype «CIMDatatype»

The identification of an object.

### 3.25.1 List of Attributes

Name	Datatype	Constraints
value	String	Type: OCL Facet:maxLength Detail: inv: self->maxLength(35)

## 3.26 IndicatorCodeType Stereotype «CIMDatatype»

A list of two mutually exclusive Boolean values that express the only possible states of a property.

### 3.26.1 List of Attributes

Name	Datatype	Constraints
value	IndicatorCodeTypeCodeList	

## 3.27 LocationType Stereotype «CIMDatatype»

The identification of a location and its associated coding scheme.

### 3.27.1 List of Attributes

Name	Datatype	Constraints
value	String	Type: OCL Facet:maxLength Detail: inv: self->maxLength(16)
codingScheme	CodingSchemeCodeTypeCodeList	

## 3.28 LongIdentificationType Stereotype «CIMDatatype»

An identification that is greater than 35 characters long. The maximum length permitted 512 characters.

### 3.28.1 List of Attributes

Name	Datatype	Constraints
value	String	Type: OCL Facet:maxLength Detail: inv: self->maxLength(512)

## 3.29 MeasurementCodeType Stereotype «CIMDatatype»

272 A code list identifying a type or location of a measure unit.

### 273 **3.29.1** List of Attributes

Name	Datatype	Constraints
value	MeasurementCodeTypeCodeList	

## 274 **3.30 MeasurementPointType Stereotype «CIMDatatype»**

275 The identification of an (inter)connection point and its associated coding scheme.

### 276 **3.30.1** List of Attributes

Name	Datatype	Constraints
value	String	Type: OCL Facet:maxLength Detail: inv: self->maxLength(35)
codingScheme	CodingSchemeCodeTypeCodeList	

## 277 **3.31 MeteorologicalPropertyCodeType Stereotype** 278 **«CIMDatatype»**

279 A code list identifying meteorological types of information.

### 280 **3.31.1** List of Attributes

Name	Datatype	Constraints
value	MeteorologicalPropertyCodeTypeCodeList	

## 281 **3.32 NominationCodeType Stereotype «CIMDatatype»**

282 The identification of a type of nomination.

### 283 **3.32.1** List of Attributes

Name	Datatype	Constraints
value	NominationCodeTypeCodeList	

## 284 **3.33 PartyType Stereotype «CIMDatatype»**

285 The identification of a market participant and its associated coding scheme.

### 286 **3.33.1** List of Attributes

Name	Datatype	Constraints
value	String	Type: OCL Facet:maxLength Detail: inv: self->maxLength(16)
codingScheme	CodingSchemeCodeTypeCodeList	

## 287 **3.34 PercentageType Stereotype «CIMDatatype»**

288 The expression of a percentage.

### 289 **3.34.1** List of Attributes

Name	Datatype	Constraints
value	Decimal	Type: OCL Facet:totalDigits Detail: inv: self->totalDigits(17)

### 3.35 PeriodSpanCodeType Stereotype «CIMDatatype»

A codelist specifying various standardised periods in time.

#### 3.35.1 List of Attributes

Name	Datatype	Constraints
value	PeriodSpanCodeTypeCodeList	

### 3.36 PhysicalPropertyCodeType Stereotype «CIMDatatype»

A code list identifying physical property types of information.

#### 3.36.1 List of Attributes

Name	Datatype	Constraints
value	PhysicalPropertyCodeTypeCodeList	

### 3.37 PositionType Stereotype «CIMDatatype»

The identification of a position in a sequential order.

#### 3.37.1 List of Attributes

Name	Datatype	Constraints
value	Integer	

### 3.38 PriceCodeType Stereotype «CIMDatatype»

A code list identifying the type of a given price amount.

#### 3.38.1 List of Attributes

Name	Datatype	Constraints
value	PriceCodeTypeCodeList	

### 3.39 ProcedureCodeType Stereotype «CIMDatatype»

A code list identifying the auction procedure used in an auction.

#### 3.39.1 List of Attributes

Name	Datatype	Constraints
value	ProcedureCodeTypeCodeList	

### 3.40 QuantityCodeType Stereotype «CIMDatatype»

A code list identifying different types of quantity.

#### 3.40.1 List of Attributes

Name	Datatype	Constraints
value	QuantityCodeTypeCodeList	

### 3.41 QuantityNatureCodeType Stereotype «CIMDatatype»

A code list identifying the nature of the gas.

#### 3.41.1 List of Attributes

Name	Datatype	Constraints
value	QuantityNatureCodeTypeCodeList	

### 3.42 ReasonCodeType Stereotype «CIMDatatype»

A code list identifying the reason of an act.

#### 3.42.1 List of Attributes



Name	Datatype	Constraints
value	ReasonCodeTypeCodeList	

### 3.43 ReferenceCodeType Stereotype «CIMDatatype»

The identification of a reference.

#### 3.43.1 List of Attributes

Name	Datatype	Constraints
value	ReferenceCodeTypeCodeList	

### 3.44 ResourceObjectType Stereotype «CIMDatatype»

The identification of a given resource object and its associated coding scheme.

#### 3.44.1 List of Attributes

Name	Datatype	Constraints
value	String	Type: OCL Facet: maxLength Detail: inv: self->maxLength(16)
codingScheme	CodingSchemeCodeTypeCodeList	

### 3.45 ResourceTypeCodeType Stereotype «CIMDatatype»

A code list identifying a gas resource.

#### 3.45.1 List of Attributes

Name	Datatype	Constraints
value	ResourceTypeCodeTypeCodeList	

### 3.46 RoleCodeType Stereotype «CIMDatatype»

A code list identifying various market roles within the gas sector.

#### 3.46.1 List of Attributes

Name	Datatype	Constraints
value	RoleCodeTypeCodeList	

### 3.47 StatusCodeType Stereotype «CIMDatatype»

A code list identifying the status of an object.

#### 3.47.1 List of Attributes

Name	Datatype	Constraints
value	StatusCodeTypeCodeList	

### 3.48 TextType Stereotype «CIMDatatype»

A textual description of a reason.

#### 3.48.1 List of Attributes

Name	Datatype	Constraints
value	String	Type: OCL Facet: maxlength Detail: inv: self->maxLength(512)

### 3.49 TimeIntervalType Stereotype «CIMDatatype»

The identification of an interval of time expressed using ISO 8601.

### 334 3.49.1 List of Attributes

Name	Datatype	Constraints
value	String	Type: OCL Facet: pattern Detail: inv: self->Pattern((((((20[0-9]{2})[\-](0[13578]1[02])[\-](0[1-9][12][0-9]3[01])((0[0-9]{4})[\-](0[469])(11))[\-](0[1-9][12][0-9]30))T((01[0-9]2[0-3]):[0-5][0-9])Z/)(([13579][26][02468][048][13579][01345789](0)[48][13579][01345789][2468][048][02468][048][02468][048][02468][1235679](0)[48][02468][1235679][2468][048][0-9][0-9][13579][26])[\-](02)[\-](0[1-9]1[0-9]2[0-9])T((01[0-9]2[0-3]):[0-5][0-9])Z/)(([13579][26][02468][1235679][13579][01345789](0)[01235679][13579][01345789][2468][1235679][02468][048][02468][1235679][02468][1235679](0)[01235679][02468][1235679][2468][1235679][0-9][0-9][13579][01345789])[\-](02)[\-](0[1-9]1[0-9]2[0-8])T((01[0-9]2[0-3]):[0-5][0-9])Z/)((([0-9]{4})-(0[13578]1[02])[\-](0[1-9][12][0-9]3[01])((0[0-9]{4})[\-](0[469])(11))[\-](0[1-9][12][0-9]30))T((01[0-9]2[0-3]):[0-5][0-9])Z/)(([13579][26][02468][048][13579][01345789](0)[48][13579][01345789][2468][048][02468][048][02468][1235679](0)[48][02468][1235679][2468][048][0-9][0-9][13579][26])[\-](02)[\-](0[1-9]1[0-9]2[0-9])T((01[0-9]2[0-3]):[0-5][0-9])Z/)(([13579][26][02468][1235679][13579][01345789](0)[01235679][13579][01345789][2468][1235679][02468][048][02468][1235679][02468][1235679](0)[01235679][02468][1235679][2468][1235679][0-9][0-9][13579][01345789])[\-](02)[\-](0[1-9]1[0-9]2[0-8])T((01[0-9]2[0-3]):[0-5][0-9])Z/))))))

### 335 3.50 TransactionCodeType Stereotype «CIMDatatype»

336 A code list identifying a specific type of transaction.

#### 337 3.50.1 List of Attributes

Name	Datatype	Constraints
value	TransactionCodeTypeCodeList	

### 338 3.51 TransferCodeType Stereotype «CIMDatatype»

339 A code list identifying the nature of a transfer.

### 340 **3.51.1** List of Attributes

Name	Datatype	Constraints
value	TransferCodeTypeCodeList	

## 341 **3.52 UnitOfMeasureCodeType Stereotype «CIMDatatype»**

342 A code list identifying a unit of measure that respects the UN Recommendation 19 specification.

### 343 **3.52.1** List of Attributes

Name	Datatype	Constraints
value	UnitOfMeasureCodeTypeCodeList	

## 344 **3.53 Version\_Integer Stereotype «CIMDatatype»**

345 The specification of a sequential suite of a document in numeric form.

### 346 **3.53.1** List of Attributes

Name	Datatype	Constraints
value	Integer	Type: OCL Facet: maxInclusive Detail: inv: self->maxInclusive(999)

347

## 4 Document Change Log

### 4.1 Version

Name	Datatype	Constraints
Version 1 2020-06-29	Initial release	
Version 2 2021-03-23	Release 6.1 Corrected validation for length of code for resourceObject to MaxLength(16)	
Version 3 2024-05-18	Updated amount_Decimal to have 12 fraction digits and 40 total digits	